



## Invitation to Bid: Construction Fire Station 49 Addendum 4 October 31, 2025

This is a cumulative response for architectural, structural, mechanical, electrical, plumbing and fire protection RFI's submitted to date.

Any revisions noted below will be incorporated into the plan set before permit application.

### **NCFRC Station #49 Precon RFI**

1. Print A1.1, overall Site Print, show a conduit to be installed from building to future gate location. This conduit is not shown anywhere but on this print and is not on the electrical set. Please indicate what size conduit and length for estimating purposes.  
**Conduit shall be 2" and extends approximately 75' from the southeast edge of the building. See attachment.**
2. Electrical Print E0.2 shows a Transformer with pad but Civil Prints and Electrical prints do not show a transformer with pad. Please indicate where the transformer is located and if we own primary conduit going to the transformer for utility connection. Locating the transformer is critical so we know how long our secondary duct bank is from there to the Main Service disconnect.  
**See transformer location on attachment.**
3. Print E2.1 note #1 tells us to install (1) 2" conduit for incoming tele/data but civil prints and electrical prints do not indicate where we are running this conduit to. please locate ending point for this tele/data conduit duct bank.  
**Termination location needs to be coordinated with the internet service provider. Allow for 200 linear feet with an adder.**
4. Keyed Note #2 on Prints E1.2 States that certain lights shall automatically turn on in the event an alarm call is received. It states coordinate requirements with alerting systems. We need more information concerning this in order to include in estimate.  
**Note #2 shall be removed from the plans and the 3 lights that are tagged shall be wired to the adjacent circuit.**
5. Please see Plumbing drawing P0.3 . We have been told by supplier that the Oil interceptor is now discontinued, please provide spec for alternate OI oil interceptor.  
**Zurn Model #Z1188. See attachment.**
6. Work room #143, on finish schedule it indicates FRP, on the elevation section sheet A6.4 it illustrates tile. Should we assume FRP.  
**These areas should be FRP. The interior elevations shall be corrected.**
7. Gear Cleaning room #144, on finish schedule it indicates FRP, on the elevation section sheet A6.4 it illustrates tile. Should we assume FRP.  
**These areas should be FRP. The interior elevations shall be corrected.**
8. Do the walls of Elec / Mech room #140 need to be insulated?  
**In order to coordinate with the mechanical drawings, insulation and drywall has been added to room #140 and 141. See attachment.**
9. S3.0 drawings show walk thru opening at dumpster enclosure, Arch drawing A2.2 at Dumpster does not show walk thru openings. Are opening required?  
**See sheet A9.1 for dumpster details, the enclosure has walk thru openings.**
10. Gear Bunker #145 indicates "28 Lockers" however the layout appears to show 40 lockers  
**The miscellaneous note stating 28 lockers is in error and will be deleted.**

11. Please reference to south side Elec/mech Room, Gear Cleaning, Gear Bunker roof. See detail Structural S3.1 and detail 7/S5.0 shows bar joist, however Arch detail 1/7.1 illustrates structural framed ceiling with CF Framing. Please clarify what roof structure shall be.

**Bar joists roof framing for this area. Structural drawings for the roof framing shall govern.**

12. The electrical and site lighting drawings do not indicate whether the service transformer feeding the new building is existing, new, or to be provided by the utility (FPL). No pad-mounted transformer, transformer schedule, or utility coordination note is shown. Please confirm the following:

- Is the service transformer existing, new by FPL, or new by electrical contractor?

**The transformer is new by FPL.**

- If new, please provide the transformer size, type (pad or pole mounted), and location.

**The drawings will be updated to indicate the transformer location. See #2 above.**

- Confirm whether the electrical contractor is responsible for providing and installing secondary conduits and conductors between the transformer and building service equipment.

**Yes, the contractor is responsible for the secondary conduits and conductors**

- Confirm if any utility coordination drawings or specifications will be issued to define this scope.

**Unknown at this time.**

13. On the door schedule plans call for kick plates. Are these to be 1/8" aluminum diamond plate material and will they be on both sides?

**Ives 8400 Series Kick Plate – US32D Stainless Steel- Push side.**

14. Video Surveillance: The "Low Voltage Systems" plans indicate multiple security cameras; however, no specifications are provided regarding camera types or the NVR/VMS manufacturer. Please coordinate with the end user to confirm their specific requirements for the Video Surveillance system.

**The low voltage drawings are for location references only. The contractor will coordinate with the owner for their specific needs.**

15. Contractors are unable to quote the Model 521S & Model 625 by OHDC. Are substitutions allowed? Clopay Model 904 (see attached) and Cookson Rolling Service Door ESD10 (see attached) can be priced. Same for Model 652 OHDC.

**Clopay Model 904 and Cookson Rolling Service Door ESD10 are acceptable alternatives.**

16. Please provide the sizes, quantities, for door TYPE F. Width x height x track design? High/Lift Track?

**14'-0" x 14'-0" missing dimension have been added. See attachment. Track design is listed on sheet A6.1.**

17. Please provide locations for OH Door Type G and confirm whether it is a counter door or rolling door.

**There are 4 type G doors in the Kitchen. Door 70 was missing from the schedule and has been readded. It Model 652 is a counter style door. See attachment.**

18. Access Controls: The plans call for Linear Access control. Please confirm that this is the access control manufacturer that the end user will require and advise if an alternate ACS manufacturer can be provided (currently Linear)

**The Linear Access Controls were specified by the owner and that is what they require.**

19. Please clarify the intended wall heights for the interior framed, non-load bearing walls. Are these partitions to extend 6" above the ceiling with kickers to the deck, or are they all to be framed to the deck?

**6" above the ceiling with kickers to the deck as required, . See attachment.**

20. Per sheet A0.20, it appears that IT Room 107 is the only UL-listed rated partition that must be framed and hung to the deck. Please confirm if this is the only wall intended to extend to the deck, or if others are as well.

**Correct. See above for other typical framed walls.**

21. The design documents appear to be inconsistent. They reference an **ES 8000T System** with a **Level E rating** for essential operations. However, based on the manufacturer's specifications, the **ES 8000T System** is **Level D rated**, not Level E. The only ES system with a **Level E rating** is the **ES 7000 System**. Please confirm which system and rating are intended for this project.

**The correct system is ES7000 System Level E,**

22. Please clarify the following regarding the tile selections and shower details:

Current selections appear as follows:

Tile-1: Floor tile

Tile-2: Wall tile

Tile-3: Shower tile (assumed to be for floors only)

A Daltile Portfolio DVE Grey 6"x24" is also listed under finish selections — please confirm if this is intended as an alternate for Tile-2 or if it is being used elsewhere.

**The Daltile Portfolio Dove Gray 6" x 24" is to be used at shower wall locations only.**

Tile-3 is called out for the shower. Please confirm if Tile-3 is intended for both floors and walls, or if Tile-2 is to be used on shower walls.

**The Daltile Portfolio Dove Gray 6" x 24" is to be used at shower wall locations only.**

Elevation 1/A6.3 shows a curb less shower. Typical bathroom shower floors are recessed; please confirm whether these are to remain a step-down configuration with bullnose transitions to match the adjacent bathroom floor.

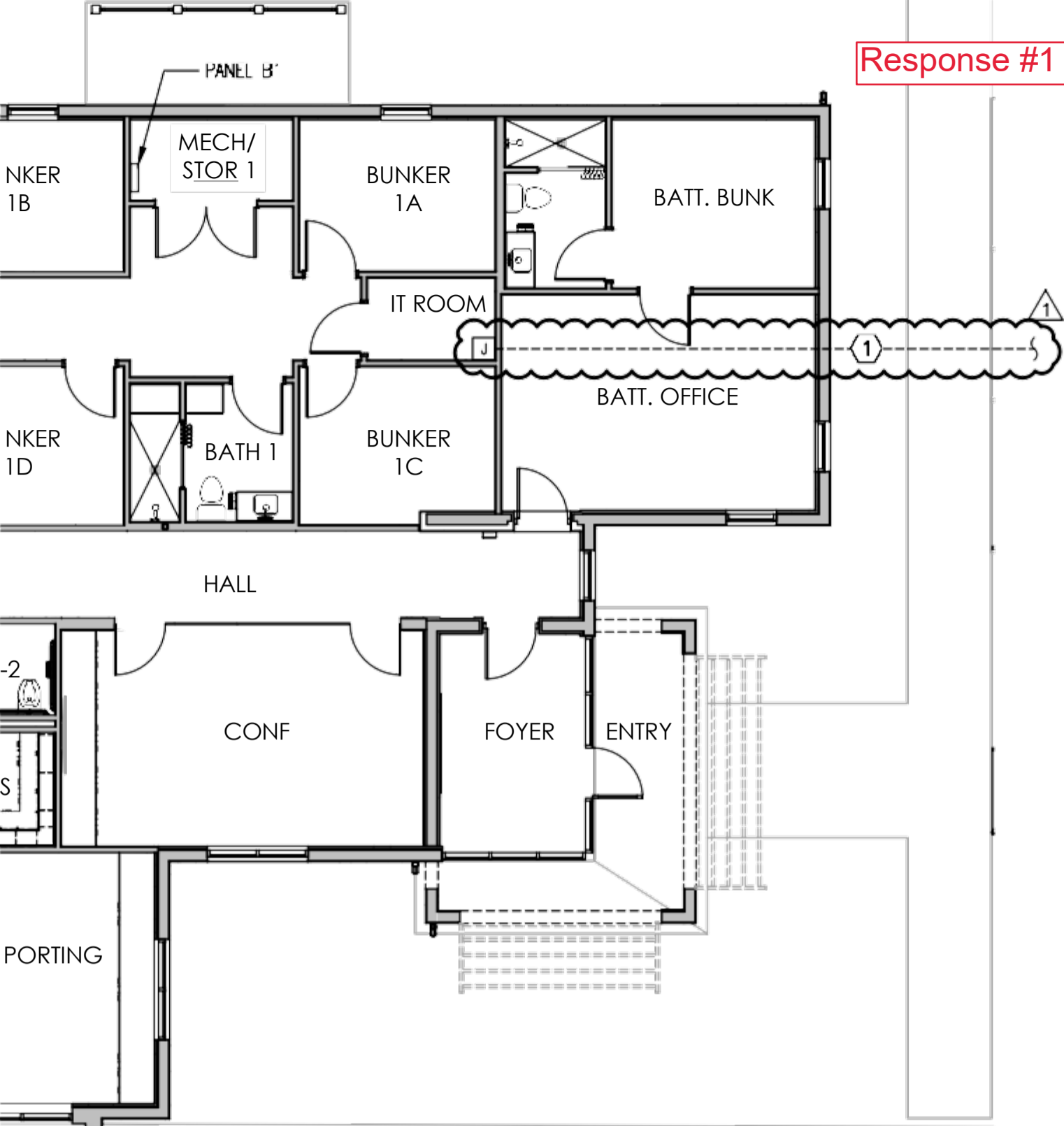
**Shower at 1/A6.3 is an ADA shower, so not step downs at this location.**

Please confirm the intended tile wall termination detail; should walls capped with Tile-2 receive a matching bullnose or a Schluter edge transition?

**Bull nose transition at all exposed tile edges.**

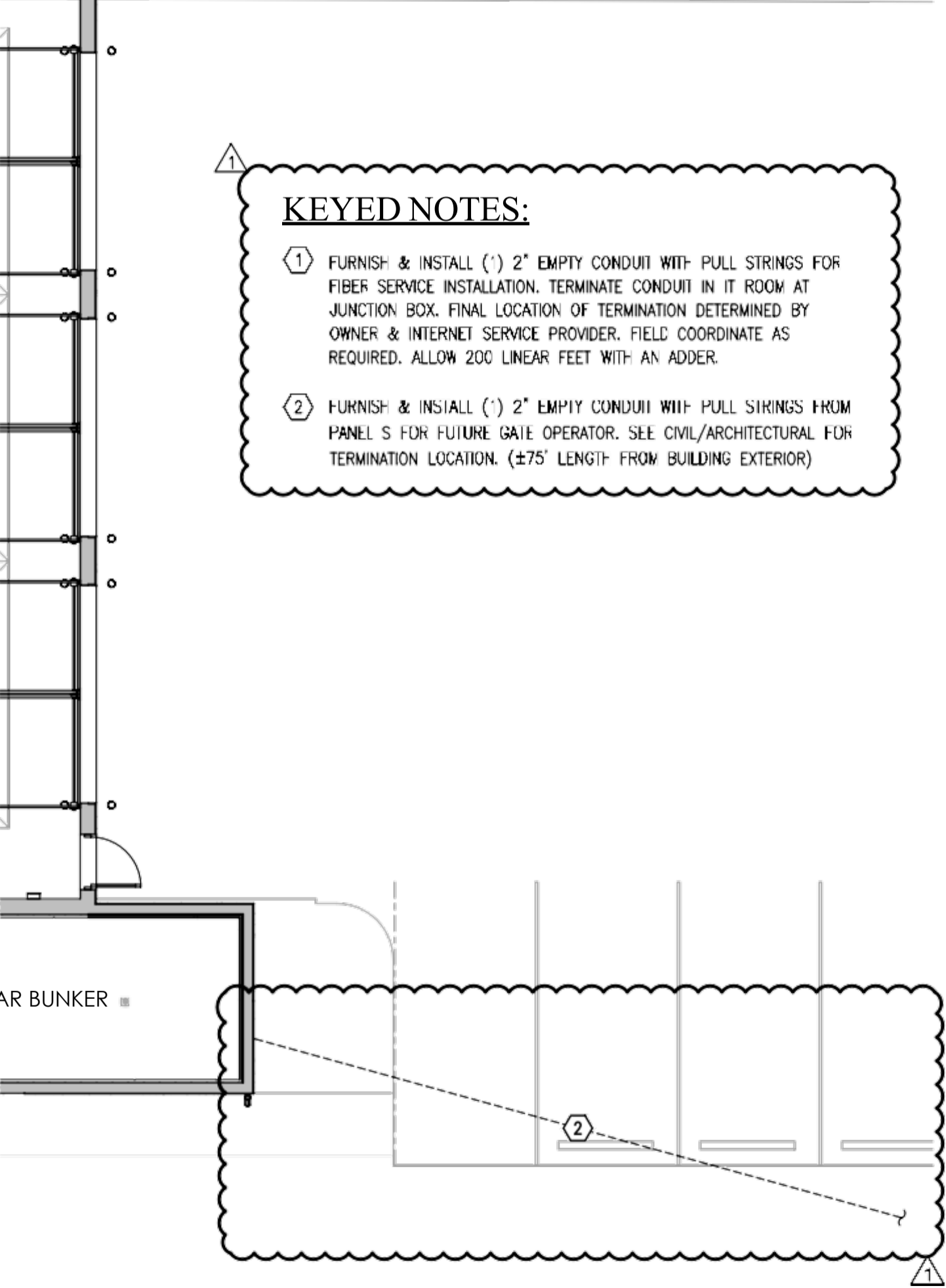
23. Can the attached equal epoxy floor products be reviewed and approved for inclusion in the base bid?

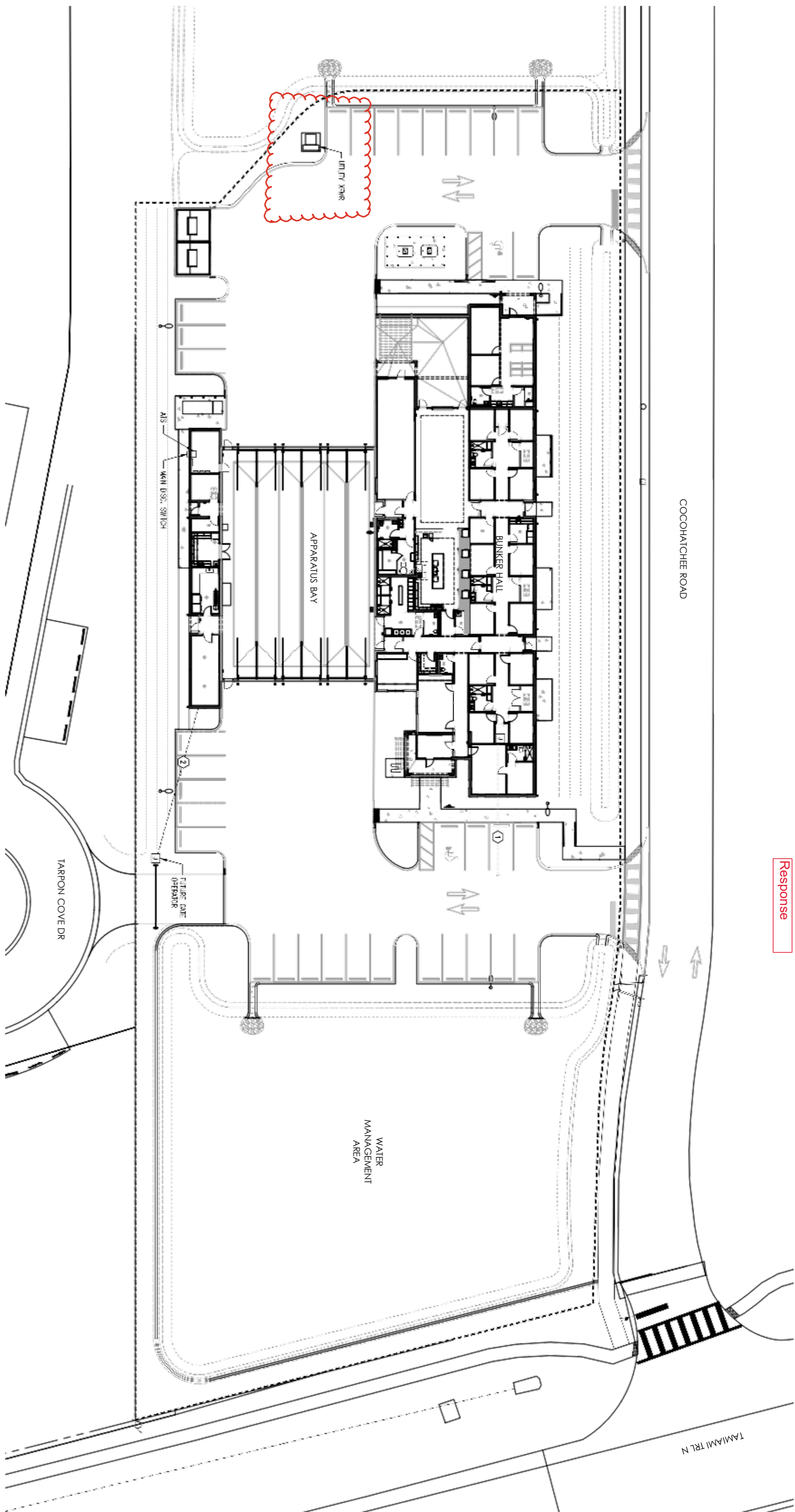
**Substitutions for epoxy flooring is not permitted at this time.**



**KEYED NOTES:**

- ① FURNISH & INSTALL (1) 2" EMPTY CONDUIT WITH PULL STRINGS FOR FIBER SERVICE INSTALLATION. TERMINATE CONDUIT IN IT ROOM AT JUNCTION BOX. FINAL LOCATION OF TERMINATION DETERMINED BY OWNER & INTERNET SERVICE PROVIDER. FIELD COORDINATE AS REQUIRED. ALLOW 200 LINEAR FEET WITH AN ADDER.
- ② FURNISH & INSTALL (1) 2" EMPTY CONDUIT WITH PULL STRINGS FROM PANEL S FOR FUTURE GATE OPERATOR. SEE CIVIL/ARCHITECTURAL FOR TERMINATION LOCATION. (±75' LENGTH FROM BUILDING EXTERIOR)





**ELECTRICAL SITE PLAN**  
SCALE: 1" = 30'-0"

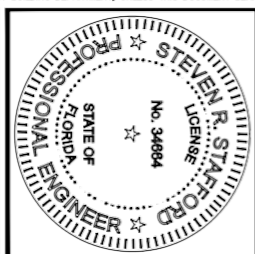


**KEYED NOTES:**

- ① FURNISH & INSTALL (1) 2" EMPTY CONDUIT WITH PULL STRINGS FOR FIBER SERVICE INSTALLATION. TERMINATE CONDUIT IN IT ROOM AT JUNCTION BOX. FINAL LOCATION OF TERMINATION DETERMINED BY OWNER & INTERNET SERVICE PROVIDER. FIELD COORDINATE AS REQUIRED. ALLOW 200 LINEAR FEET WITH AN ADDER.
- ② FURNISH & INSTALL (1) 2" EMPTY CONDUIT WITH PULL STRINGS FROM PANEL S FOR FUTURE GATE OPERATOR. SEE CIVIL/ARCHITECTURAL FOR TERMINATION LOCATION. (475' LENGTH FROM BUILDING EXTERIOR)

THIS DESIGN AND THE DRAWINGS THEREOF, PREPARED FOR THIS PROJECT, ARE THE PROPERTY OF THE ENGINEER, STAFFORD ENGINEERING, INC., AND THE DESIGN AND/OR DRAWINGS MAY NOT BE USED IN WHOLE OR IN PART FOR ANY USE OTHER THAN FOR THE ORIGINAL PROJECT FOR WHICH THE DESIGN AND/OR DRAWINGS WERE PREPARED, WITHOUT EXPRESSED WRITTEN PERMISSION OF THE ENGINEER, STAFFORD ENGINEERING, INC. NO BUILDING PERMIT SHALL BE ISSUED BY ANY BUILDING DEPARTMENT, UNLESS THIS DOCUMENT BEARS THE ORIGINAL SEAL AND SIGNATURE OF THE ENGINEER, STAFFORD ENGINEERING, INC.

DATE	08/11/25
DRAWN BY	RAM
CHECKED BY	S.R.S.
JOB NUMBER	24080



#	REVISION/DATE
1	RFT CHANGES OCTOBER 27, 2025
2	ISSUED FOR BID SEPTEMBER 30, 2025
3	ISSUED FOR PERMIT OCTOBER 11, 2025

**STAFFORD ENGINEERING, INC.**  
3525 Bonta Beach Rd., Suite 111, Bonta Springs, FL 34134  
239-948-5841 / 239-948-5990 FAX  
www.staffordengineeringinc.com  
Steven R. Stafford - PE - Florida License # 34664  
Certificate of Authorization No. 26464

PROJECT NAME:  
**North Collier Fire Control & Rescue Station #49**  
Cocohatchee Road  
Naples, FL 34110

NOTE: SHEET IS NEW WITH REVISION 1.

**E1.5**



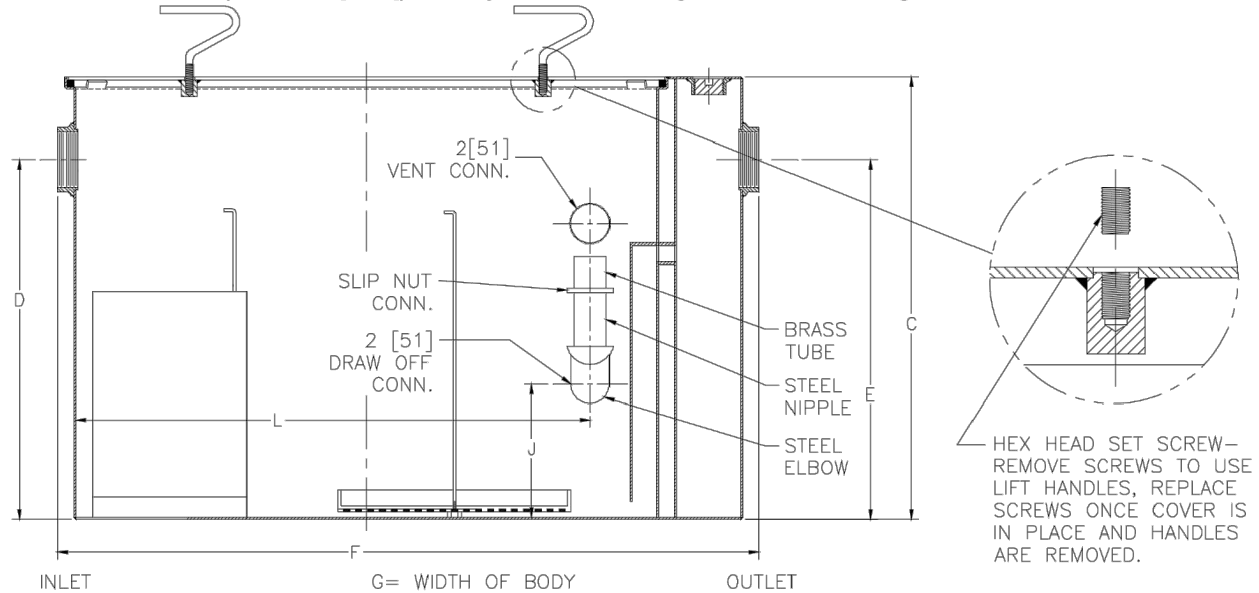
# Z1188 LARGE CAPACITY OIL INTERCEPTOR

**Response #5**

SPECIFICATION SHEET

TAG \_\_\_\_\_

Dimensional Data (inches and [ mm ]) are Subject to Manufacturing Tolerances and Change Without Notice



Flow Rate GPM [LPM]	Inlet/ Outlet Size	Water Capacity Gal. [L]	App. Wt. Lbs. [Kg]	No. of Covers	Dimensions In Inches [mm]					
					C	D/E	F	G	J	L
75 [284]	3 [76]	65 [246]	332 [151]	1	22-3/4 [578]	18-1/2 [470]	36 [914]	28-5/8 [727]	6-7/8 [175]	25-3/4 [654]
100 [379]	3 [76]	110 [306]	432 [196]	1	27 [686]	23 [584]	42-3/4 [1086]	33-5/8 [854]	11-3/8 [289]	30-1/8 [765]
125 [473]	3 [76]	150 [568]	780 [354]	2	30-1/8 [765]	24-1/2 [622]	49-1/4 [1251]	40 [1016]	12-7/8 [327]	36-5/8 [916]
150 [568]	4 [102]	190 [719]	888 [403]	2	30-3/4 [781]	25-1/4 [641]	56 [1422]	41-3/8 [1051]	13-1/8 [333]	43-7/8 [1114]
200 [757]	4 [102]	265 [1003]	1055 [478]	2	35-1/2 [901]	29-7/8 [759]	61 [1549]	43-5/8 [1108]	17-3/4 [451]	46-5/8 [1184]
250 [946]	5 [127]	460 [1741]	1438 [625]	2	41 [1041]	36 [914]	71 [1803]	51-3/8 [1305]	23-3/8 [594]	56-5/8 [1438]
300 [1136]	5 [127]	660 [2498]	1840 [835]	2	46-1/4 [1175]	39-5/8 [1006]	80 [2032]	58-3/8 [1483]	27 [686]	65-5/8 [1667]
350 [1325]	6 [152]	860 [3255]	2180 [989]	2	50-1/2 [1283]	43-7/8 [1114]	87 [2210]	63-5/8 [1616]	30-3/4 [781]	74-1/8 [1882]
400 [1514]	6 [152]	1090 [4126]	2536 [1150]	3	54-1/4 [1378]	47-5/8 [1210]	94 [2388]	67 [1702]	34-1/2 [876]	79-1/8 [2009]
450 [1703]	6 [152]	1275 [4826]	2816 [1277]	3	55-1/4 [1403]	48-5/8 [1235]	100 [2540]	72 [1829]	35-1/2 [902]	85-3/8 [2168]
500 [1893]	6 [152]	1435 [5431]	2970 [1347]	3	57-1/4 [1454]	51-5/8 [1311]	104 [2642]	74 [1880]	38-1/2 [978]	88-3/8 [2245]

**ENGINEERING SPECIFICATION: ZURN Z1188**

Large capacity Acid Resistant Coated interior and exterior fabricated steel oil interceptor, with bronze cleanout plug and visible double wall trap seal, removable combination pressure equalizing/flow diffusing baffle and sediment bucket, horizontal baffle, adjustable oil drawoff and vent connections either side. Complete with secured, gasketed, non-skid cover with removable lift handles and flow control fitting. Regularly furnished with inlet and outlet in high position.

**OPTIONS** (Check/specify appropriate options)

**PREFIXES**

\_\_\_ **Z** Acid Resistant Coated Fabricated Steel\*

**SUFFIXES**

\_\_\_ **-E** Acid Resistant Coated interior and exterior fabricated steel extension section. (Specify 'C' Dim. required) for recessed installation.

**-HD** Heavy-duty traffic cover rated at 10,000 lbs [4536 kg.] maximum load. An increased 'C' dim. is required when -HD option is specified. (See -HD option specification sheet)

\_\_\_ **-K** Anchor flange 1-3/4 [44] down from top and 2 [51] wide. A 3 [76] minimum extension height is required when -K option is specified.

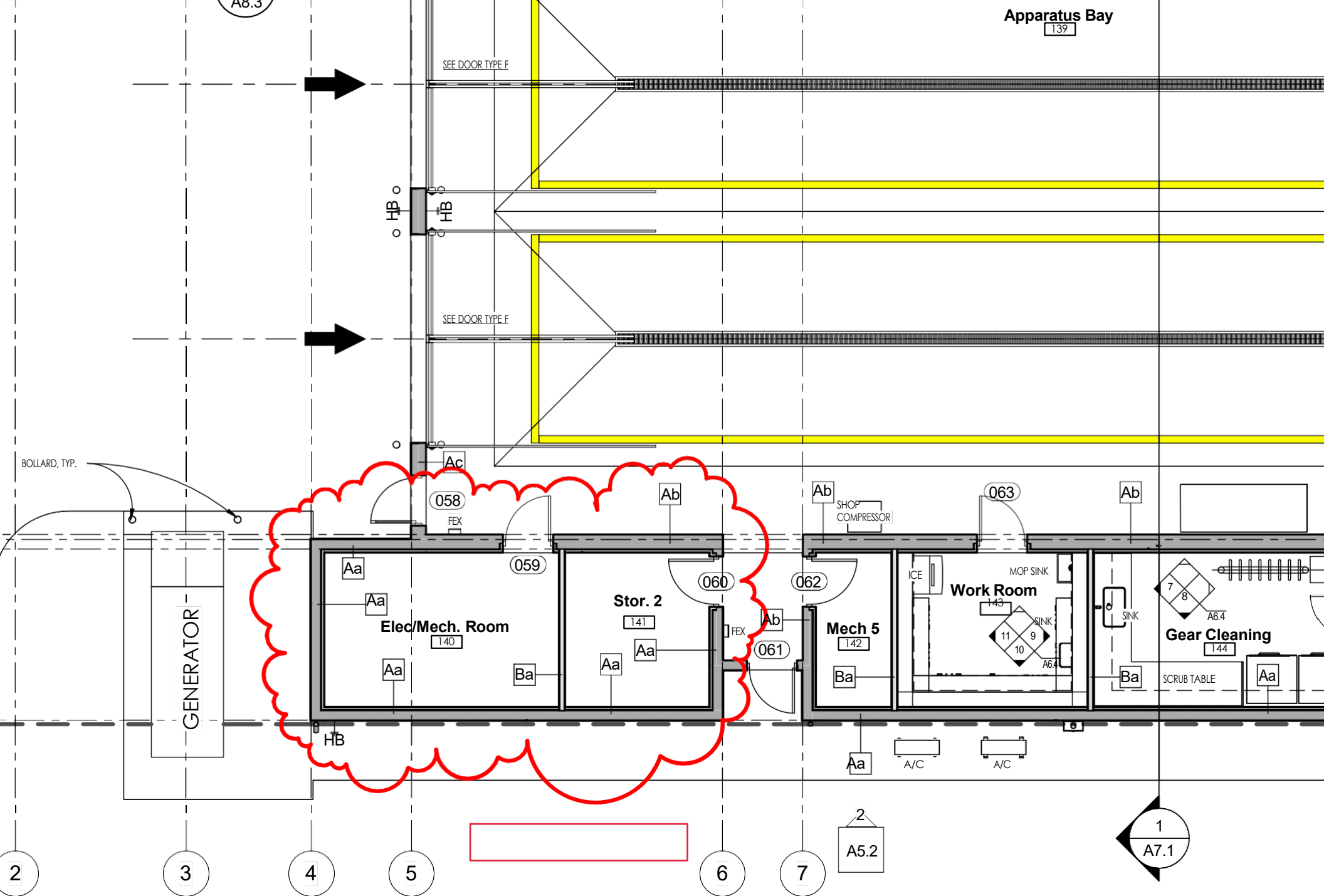
\_\_\_ **-KC** Anchor flange 1-3/4 [44] down from top and 2 [51] wide with clamp collar. A 3 [76] minimum extension height is required when -KC option is specified.

\_\_\_ **-PW** Plug wrench

\* Regularly furnished unless otherwise specified.

Zurn Industries, LLC | Specification Drainage Operation  
1801 Pittsburgh Avenue, Erie, PA U.S.A. 16502 · Ph. 855-663-9876, Fax 814-454-7929  
In Canada | Zurn Industries Limited  
3544 Nashua Drive, Mississauga, Ontario L4V 1L2 · Ph. 905-405-8272, Fax 905-405-1292  
[www.zurn.com](http://www.zurn.com)

Rev. K  
Date: 10/12/16  
C.N. No. 135336  
Prod. | Dwg. No. Z1188

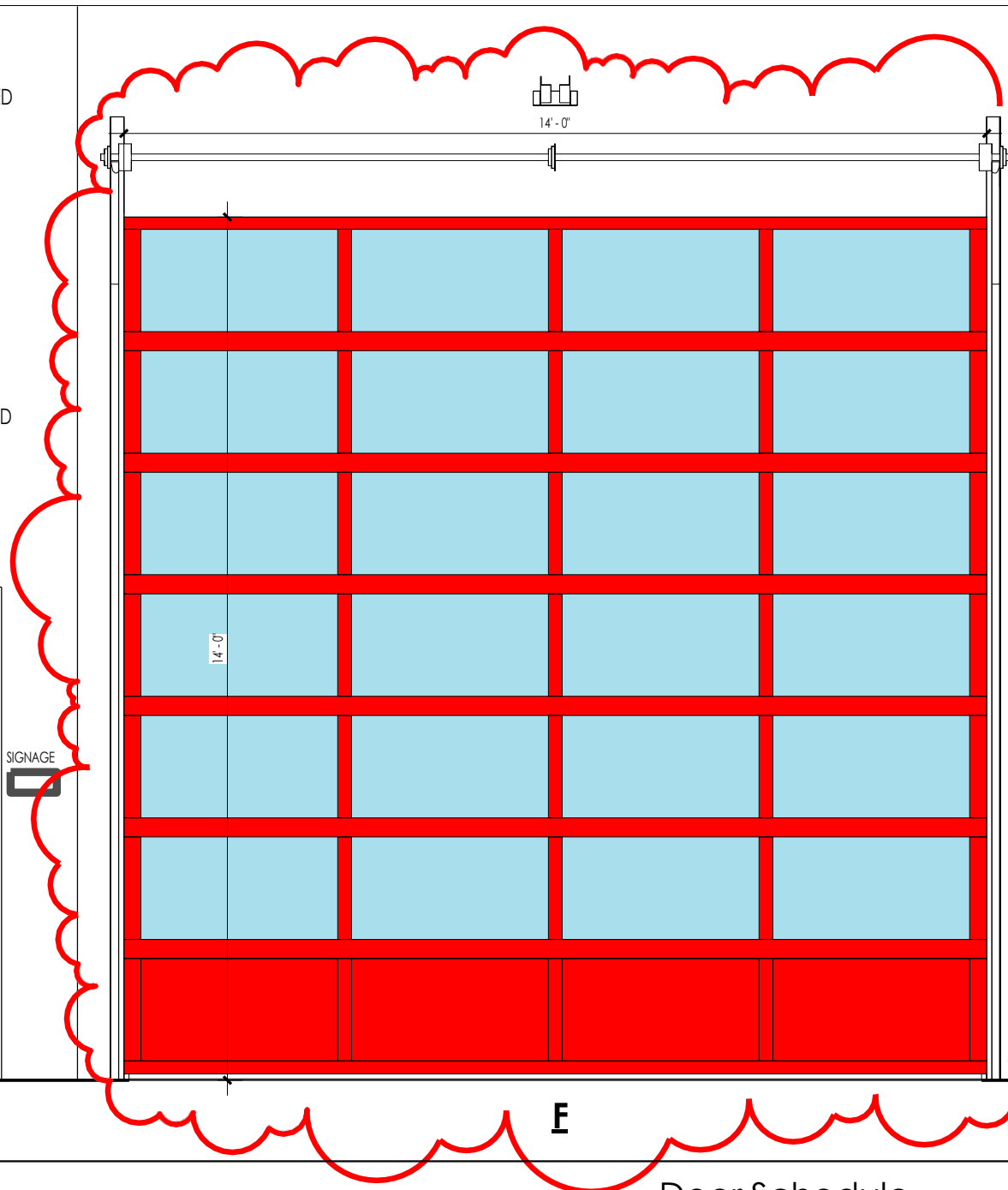
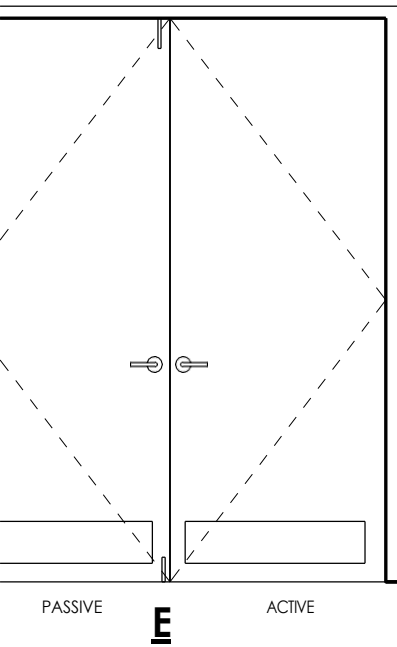


1 Fire Station Floor Plan- Notes  
A2.2 1/8" = 1'-0"

No.	Description
1	Pre Bid Revisions

FOR DELTA STEEL DOOR AND FRAME FOR  
 VARIOUS OPENINGS.  
 DOOR HOLLOW METAL PREHUNG, PREBORED  
 PANEL SWING DOOR. SMOOTH FINISH,  
 MED, PAINT 6 SIDE

**E:**  
 SCHEDULE AND NOTES  
 FOR SQUARE EDGE HINGES PER LEAF  
**R:**  
 SCHEDULE AND NOTES  
**ET:**  
 SCHEDULE AND NOTES  
 STYLE HANDLE TO MATCH EXISTING SHAPE AND  
 SCHEDULE FOR FUNCTION  
 LEAF- FLUSH BOLT AT DOOR EDGE  
 PLATE PER LEAF



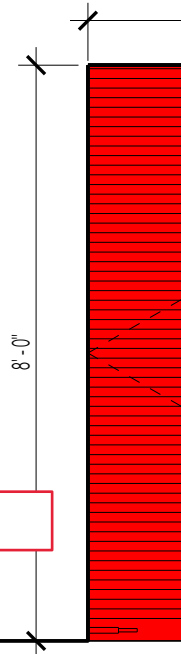
OVERHEAD DOOR MODEL 521S  
 (FBC) ALUMINUM WIND RATED  
 SECTIONAL DOOR  
 FL PRODUCT APPROVAL 17629.1  
 DESIGN PRESSURE: +48.00/-54.00  
 MATERIAL EXTRUDED 6061-T6  
 ALUMINUM

SHORT PANEL WITH GLAZING, SOLID  
 AT BOTTOM PANEL.  
 HIGH LIFT TRACKS  
 POWDERCOAT FINISH RAL 3001

SIGNAL RED  
 ELECTRIC OPERATOR: RHX HEAVY  
 DUTY SIDE MOUNT OPERATOR

PROVIDE 2 SAFETY DEVICES AS  
 REQUIRED: PHOTOELECTRIC AND  
 ELECTRIC SENSING EDGE (SAFETY  
 EDGE)  
 AT EXIT DOORS (EAST SIDE) LED EXIT  
 LIGHT SAFETY SYSTEM, "BRINK ALERT"  
 OR APPROVED AQUAL

OVERHE  
 MATERIA  
 MANUAL  
 CYLINDE  
 POWDER



Door Schedule

ID	Type	Manufacturer	SIZE			THRESHOLD	FIRE RATING	COMMENTS	Type Mark	
			WIDTH	HEIGHT	THICKNESS					
1	Storefront Single	ES Windows	3' - 0"	8' - 0"	1 3/4"	1/2" ADA	NR		A	Maglock, Entry Lever,

039	Storefront Single	ES Windows	3' - 0"	8' - 0"	1 3/4"	1/2" ADA	NR	A	Maglock Entry Lever, Closer
040	Interior SC Wood D.W.	Vt Industries	3' - 0"	8' - 0"	1 3/8"		NR	J	Passage Lever, Kickplate
041	Interior SC Wood D.W. w/ lite	VT Industries	3' - 0"	8' - 0"	1 3/8"		NR	L	Push, Pull Plate, Kickplate, Closer
042	Interior HM M.O. 90 min w/ lite	Daybar	3' - 0"	8' - 0"	1 3/4"		90 min.	M	Maglock Entry Lever, Kickplate, Closer
043	Interior SC Wood D.W.	Vt Industries	3' - 0"	8' - 0"	1 3/8"		NR	J	Privacy Lever, Kickplate
044	Interior SC Wood D.W.	Vt Industries	3' - 0"	8' - 0"	1 3/8"		NR	J	Privacy Lever, Kickplate
045	Interior HM M.O. 90 min w/ lite	Daybar	3' - 0"	8' - 0"	1 3/4"		90 min.	M	Maglock Entry Lever, Kickplate, Closer
046	Interior HM M.O. 90 min w/ lite	Daybar	3' - 0"	8' - 0"	1 3/4"		90 min.	M	Maglock, Entry Lever, Kickplate, Closer
047	Interior SC Wood D.W. w/ lite	VT Industries	3' - 0"	8' - 0"	1 3/8"		NR	L	Push, Pull Plate, Kickplate, Closer
048	Interior SC Wood D.W.	Vt Industries	3' - 0"	8' - 0"	1 3/8"		NR	J	Passage Lever, Kickplate
049	Interior SC Wood D.W.	Vt Industries	3' - 0"	8' - 0"	1 3/8"		NR	J	Privacy Lever, Kickplate
050	Interior SC Wood D.W.	Vt Industries	3' - 0"	8' - 0"	1 3/8"		NR	J	Passage Lever, Kickplate
051	Interior SC Wood D.W.	Vt Industries	3' - 0"	8' - 0"	1 3/8"		NR	J	Storage Lever, Maglock, Kickplate,
052	Interior SC Wood D.W.	Vt Industries	3' - 0"	8' - 0"	1 3/8"		NR	J	Passage Lever, Kickplate
053	Interior SC Wood D.W.	Vt Industries	3' - 0"	8' - 0"	1 3/8"		NR	J	Storage Lever, Kickplate
054	Interior SC Wood D.W.	Vt Industries	3' - 0"	8' - 0"	1 3/8"		NR	J	Privacy Lever, Kickplate
055	GLASS 3'-0" X 8'-0"	TBD	3' - 0"	8' - 0"	5/8"		NR	H	Glass Push/ Pull Bar
056	GLASS 3'-0" X 8'-0"	TBD	3' - 0"	8' - 0"	5/8"		NR	H	Glass Push/ Pull Bar
057	Storefront Single	ES Windows	3' - 0"	8' - 0"	1 3/4"	1/2" ADA	NR	A	Maglock, Entry Lever, Closer
058	Storefront Single	ES Windows	3' - 0"	8' - 0"	1 3/4"	1/2" ADA	NR	A	Maglock Entry Lever, Closer
059	Interior HM M.O.	Daybar	3' - 0"	8' - 0"	1 3/4"		NR	C	Storage Lever, Maglock, Kickplate, Closer, Panic Bar
060	Interior HM M.O.	Daybar	3' - 0"	8' - 0"	1 3/4"		NR	C	Storage Lever, Kickplate
061	Exterior HM M.O. Galvanized	Daybar	3' - 0"	8' - 0"	1 3/4"	1/2" ADA	NR	D	Entry Lever, Maglock, Kickplate, Closer, Exterior Sweep
062	Interior HM M.O.	Daybar	3' - 0"	8' - 0"	1 3/4"		NR	C	Storage Lever, maglock, Kickplate
063	Interior HM M.O.	Daybar	3' - 0"	8' - 0"	1 3/4"		NR	C	Storage Lever, Kickplate, Flush Bolt
064	Interior HM M.O.	Daybar	3' - 0"	8' - 0"	1 3/4"		NR	C	Storage Lever, Kickplate
065	Interior HM M.O.	Daybar	3' - 0"	8' - 0"	1 3/4"		NR	C	Storage Lever, Kickplate
066	Exterior HM M.O. Galvanized	Daybar	3' - 0"	8' - 0"	1 3/4"	1/2" ADA	NR	D	Entry Lever. Maglock, Kickplate, Closer, Exterior Sweep
067	Roll Up Door	Overhead Door Corp.	7' - 0"	8' - 0"			NR	G	Padlock Ready
068	Roll Up Door	Overhead Door Corp.	7' - 0"	8' - 0"			NR	G	Padlock Ready
069	Roll Up Door	Overhead Door Corp.	7' - 0"	8' - 0"			NR	G	Padlock Ready
070	Roll Up Door	Overhead Door Corp.	7' - 0"	8' - 0"			NR	G	Padlock Ready

No.	Description	Date
1	Pre Bid Revisions	tdb

Project # 23.1083  
 Date: 9.30.25  
 Drawn: Author  
 Checked: Checker  
 Scale As indicated

**North Collier Fire Control and Rescue Dis**  
**Station #49**  
 COCOHATCHEE ROAD NAPLES FLORIDA 34110  
 For: North Collier Fire Control & Rescue District  
 Finish Sc



