

**FIRE ALARM SYSTEM NOTES:**

- THE FIRE ALARM SYSTEM SHALL BE INSTALLED AS TO BE IN FULL COMPLIANCE WITH THE GUIDELINE FOR THE INSTALLATION OF FIRE ALARM SYSTEMS BY NFPA 72, ALL CODES, ORDINANCES, RULES, ORDERS AND OTHER LEGAL REQUIREMENTS OF THE PUBLIC AUTHORITIES WHICH BEAR ON THE PERFORMANCE OF THIS WORK. FLORIDA FIRE PREVENTION CODE, 8TH EDITION (2023), NFPA 72 (2019), AND NFPA 70 (2020).
- THE ELECTRICAL CONTRACTOR SHALL INSTALL THE FIRE ALARM SYSTEM COMPLETE AND OPERABLE AS SHOWN ON THE DRAWINGS. ANY ITEM OR SERVICE REQUIRED TO INSTALL, CONSTRUCT, STARTUP OR OPERATE THIS SYSTEM SHALL BE CONSIDERED TO BE INCLUDED IN THIS SCOPE OF WORK EVEN IF IT IS NOT SPECIFICALLY MENTIONED IN THE SPECIFICATIONS OR DRAWINGS.
- FURNISH AND INSTALL AN ADDRESSABLE CONTROL PANEL WITH CLASS B INITIATING DEVICE CIRCUITRY AND CLASS B NOTIFICATION APPLIANCE CIRCUITRY. BATTERY BACKUP OPERATION SHALL BE FOR A MINIMUM OF 24 HOURS WITH A FIVE MINUTE RING DOWN AT THE END OF THE 24 HOUR PERIOD. PROVIDE A NAMEPLATE READING "FIRE ALARM CONTROL PANEL" ON THE FRONT. INSTALL FIRE DEPARTMENT LOCK AS REQUIRED. THE FIRE ALARM CONTROL PANEL SHALL NOT BE EQUIPPED WITH A "CITY DISCONNECT" SWITCH. THE FIRE ALARM CONTROL PANEL AND THE DIALER SHALL BE ABLE TO TRANSMIT 4 DISTINCT ALARM SIGNALS (SUPERVISORY, ALARM, TROUBLE, AND WATERFLOW ALARM) TO THE REMOTE SUPERVISING STATION. PANEL SHALL BE FULLY RECESSED TYPE.
- INSTALL 3/4" MINIMUM SIZE EMT CONDUIT WITH COUPLINGS AND EXPANSION JOINTS; CABLE WITHOUT CONDUIT IS PERMITTED WHERE INSTALLED NOT EXPOSED; ROUTE AS REQUIRED. FIRE ALARM METAL ARMORED CABLE IS ACCEPTABLE IN LIEU OF CONDUIT.
- FIRE ALARM CABLE SHALL BE SOLID CONDUCTORS, STRANDED CONDUCTORS ARE NOT ACCEPTABLE.
- FURNISH AND INSTALL END-OF-LINE RESISTORS AND CLEARLY MARK THE LOCATION OF THIS DEVICE.
- BAG ALL SMOKE DETECTORS UNTIL THE FINAL FIRE DEPARTMENT INSPECTION.
- FURNISH AND INSTALL NAMEPLATES IN ACCORDANCE WITH THE FIRE DEPARTMENT GUIDELINES.
- FURNISH AND INSTALL THE FOLLOWING: ADDRESSABLE DUAL ACTION MANUAL PULL STATIONS, ADDRESSABLE PHOTOELECTRIC SMOKE DETECTORS, ADDRESSABLE HEAT DETECTORS, MULTI-CANDELA HORN STROBE UNITS, MULTI-CANDELA STROBE ONLY UNITS, HORN ONLY UNITS, ADDRESSABLE IONIZATION LOW-FLOW DUCT SMOKE DETECTORS WITH A DUCT DETECTOR REMOTE TEST/INDICATOR.
- SLEEPING ROOMS REQUIRE A SOUND LEVEL OF AT LEAST 75 dBA AT THE PILLOW LEVEL AND SHALL HAVE A LOW FREQUENCY SQUARE WAVE OR EQUIVALENT 520 HZ +/- 10%, PER NFPA 72 18.4.5.1 & 18.4.5.3.
- ALL FIRE ALARM SYSTEM COMPONENTS SHALL BE UL LISTED.
- DACT SYSTEM SHALL EMPLOY THE FOLLOWING:
  - ONE (1) TELEPHONE LINE
  - ONE (1) OF THE FOLLOWING: ONE-WAY PRIVATE RADIO ALARM SYSTEM, TWO-WAY RF MULTIPLEX SYSTEM, TRANSMISSION MEANS COMPLYING WITH NFPA 72 26.6.3.1.
  - CONTRACTOR SHALL ALSO PROVIDE A METHOD OF TRANSMISSION OF EMERGENCY SIGNALS VIA DIRECT CONNECTION OVER FACILITY INTERNET VIA LAN, WAN, ETC., AND/OR CELLULAR COMMUNICATION DIALER.
  - AES RADIO SHALL BE INSTALLED FOR FIRE ALARM MONITORING.
- ALL WIRING TO BE SIZED, COLOR CODED, AND IN QUANTITIES AS RECOMMENDED BY THE MANUFACTURER OF THE EQUIPMENT. NOTE: FIRE ALARM WIRE AND CABLE TO COMPLY WITH NEC. ART. 760
- IDENTIFY ALARM CONDUIT WITH RED PAINT AT 5' INTERVALS
- FOR INCOMING AC POWER LINE FURNISH AND INSTALL A TRANSIENT VOLTAGE SURGE SUPPRESSION (SPD) DEVICE
- FOR ALL LINES THAT EXIT THE BUILDING FURNISH AND INSTALL A TRANSIENT VOLTAGE SURGE SUPPRESSION (SPD) DEVICE
- MANUAL STATIONS SHALL BE USED ONLY FOR PROTECTIVE SIGNALING PURPOSES.
- ALL ALARM SYSTEM COMPONENTS SHALL BE LISTED AS SUITABLE FOR USE IN THE PHYSICAL LOCATIONS ACTUALLY USED. (I.E.: INDOOR, DAMP, WET HAZARDOUS, EXPLOSION-PROOF, AND ETC.)
- THE FIRE ALARM SYSTEM CONTRACTOR IS RESPONSIBLE FOR OBTAINING A SEPARATE PERMIT FOR AN APPROVED FIRE ALARM SYSTEM, AND FOR INSTALLATION & ACCEPTANCE OF THE SYSTEM BY THE LOCAL AUTHORITY HAVING JURISDICTION. LOCATION AND QUALITIES OF DEVICES ARE SHOWN ON THE PLANS AND IDENTIFIED BY THE SYSTEM REQUIREMENTS. IT IS A REQUIREMENT OF THIS PROJECT THAT THE ALARM EQUIPMENT MANUFACTURER WHICH IS TO PROVIDE THE ALARM SYSTEM SHALL PROVIDE :
  - EQUIPMENT SHOP DRAWINGS (SUBMITTALS)
  - FIELD WIRING DIAGRAMS WHICH INDICATE CONDUCTOR AND CABLE SIZES.
  - ELECTRICAL LOAD TOTALIZATION OF THE SYSTEM TO VERIFY THE RATING OF THE REQUIRED STANDBY BATTERY (WHICH IS PART OF THE SYSTEM) IN ACCORD WITH NFPA 72 REQUIREMENTS.
  - PROVIDE THE OWNER WITH THE NECESSARY REQUIREMENTS FOR OPERATIONS AND MAINTENANCE PROCEDURES, MANUALS, SYSTEM DOCUMENTATION, AND TRAINING AS NEEDED TO OPERATE AND MAINTAIN THE SYSTEMS AS INTENDED OVER TIME.
- MOUNT THE PULL STATIONS AT 48" AFF & MOUNT HORN/STROBES 84" ABOVE FINISHED GROUND TO THE BOTTOM OF THE JUNCTION BOX. (PROVIDE WEATHERPROOF TYPE AS REQUIRED).
- CIRCUIT BREAKER FEEDING FACP MUST HAVE "LOCK ON" PROVISION
- WHEN THE GUARD DEVICE FOR THE PULL STATION IS LIFTED TO GAIN ACCESS TO THE PROTECTED ALARM INITIATING DEVICE, A PIERCING SELF-CONTAINED 95 OR 105 DB WARNING HORN SOUNDS. WHEN THE COVER IS LIFTED, IT DROPS OFF THE GUARD FRAME AND A HORN WILL SOUND UNTIL THE COVER IS SNAPPED BACK ONTO THE FRAME.
- REGULARLY SCHEDULED PERIODIC SYSTEM TESTS SHALL BE CONDUCTED ACCORDING TO THE REQUIREMENTS OF NFPA 72 CHAPTER 14 BY QUALIFIED PERSONNEL.
- A DOCUMENT CABINET LABELED "SYSTEM RECORD DOCUMENTS" SHALL BE PROVIDED WITHIN 3 FEET OF THE FACP.

**FIRE ALARM SYMBOL LEGEND**

	FIRE ALARM SYSTEM MANUAL PULL STATION IN FLUSH (FINISHED SPACES) OR SURFACE (UNFINISHED SPACES) OUTLET BOX 46-INCHES ABOVE FINISHED FLOOR UNLESS OTHERWISE INDICATED. SUBSCRIPT 'WB', WHEN INDICATED, DENOTES WEATHERGUARD.
	FIRE ALARM SYSTEM HORN IN FLUSH (FINISHED SPACES) OR SURFACE (UNFINISHED SPACES) OUTLET BOX BETWEEN 80-INCHES AND 96-INCHES ABOVE FLOOR OR 6-IN. BELOW CLG. WHICHEVER IS LOWER. SUBSCRIPT 'WP', WHEN INDICATED, DENOTES WEATHERPROOF
	FIRE ALARM SYSTEM LOW FREQUENCY AUDIBLE SOUNDER IN FLUSH (FINISHED SPACES) OR SURFACE (UNFINISHED SPACES) OUTLET BOX BETWEEN 80-INCHES AND 96-INCHES ABOVE FLOOR OR 6-INCHES BELOW CEILING, WHICH EVER IS LOWER.
	FIRE ALARM SYSTEM COMBINATION HORN AND LIGHT IN FLUSH (FINISHED SPACES) OR SURFACE (UNFINISHED SPACES) OUTLET BOX BETWEEN 80-INCHES AND 96-INCHES ABOVE FLOOR OR 6-IN. BELOW CLG. WHICHEVER IS LOWER. SUBSCRIPT 'WP' DENOTES WEATHERPROOF
	FIRE ALARM SYSTEM COMBINATION LIGHT AND LOW FREQUENCY AUDIBLE SOUNDER IN FLUSH (FINISHED SPACES) OR SURFACE (UNFINISHED SPACES) OUTLET BOX BETWEEN 80-INCHES AND 96-INCHES ABOVE FLOOR OR 6-IN. BELOW CLG. WHICHEVER IS LOWER.
	FIRE ALARM SYSTEM VISUAL SIGNAL LIGHT IN FLUSH (FINISHED SPACES) OR SURFACE (UNFINISHED SPACES) OUTLET BOX, CEILING MOUNTED.
	FIRE ALARM SYSTEM ROTATING BEACON IN FLUSH (FINISHED SPACES) OR SURFACE (UNFINISHED SPACES) OUTLET BOX, CEILING MOUNTED.
	FIRE ALARM SYSTEM VISUAL SIGNAL LIGHT IN FLUSH (FINISHED SPACES) OR SURFACE (UNFINISHED SPACES) OUTLET BOX BETWEEN 80-INCHES AND 96-INCHES ABOVE FLOOR OR 6-INCHES BELOW CEILING, WHICH EVER IS LOWER.
	FIRE ALARM SYSTEM HEAT DETECTOR
	FIRE ALARM SYSTEM SMOKE DETECTOR
	FIRE ALARM SYSTEM DUCT SMOKE DETECTOR. FURNISHED AND WIRED BY ELECTRICAL CONTRACTOR, INSTALLED BY MECHANICAL CONTRACTOR UNLESS OTHERWISE INDICATED.
	FIRE ALARM SMOKE DETECTOR WITH SOUNDER BASE
	FIRE ALARM SYSTEM CEILING MOUNTED CARBON MONOXIDE DETECTOR.
	FIRE ALARM SYSTEM CEILING MOUNTED COMBINATION SMOKE AND CARBON MONOXIDE DETECTOR.
	FIRE ALARM SYSTEM REMOTE TEST SWITCH FOR DUCT SMOKE DETECTOR
	FLOW DETECTOR/SWITCH
	PRESSURE DETECTOR/SWITCH
	VALVE SUPERVISORY SWITCH (TAMPER SWITCH)
	DOOR HOLDER
	ADDRESSABLE INTELLIGENT FIRE ALARM SYSTEM CONTROL PANEL
	FIRE ALARM TERMINAL CABINET
	FIRE ALARM ANNUNCIATOR. FURNISHED AND WIRED BY ELECTRICAL CONTRACTOR, INSTALLED BY MECHANICAL CONTRACTOR UNLESS OTHERWISE INDICATED.
	FIRE ALARM SYSTEM ADDRESSABLE INPUT MONITORING MODULE
	FIRE ALARM SYSTEM ADDRESSABLE OUTPUT CONTROL MODULE
	SURGE PROTECTION DEVICE

**SEQUENCE OF OPERATION:**

- THE ACTIVATION OF A FIRE ALARM INITIATING DEVICE SHALL AUTOMATICALLY INITIATE THE FUNCTIONS DETAILED BELOW:
- ACTIVATION OF PULL STATIONS, WATERFLOW SWITCHES, SMOKE DETECTORS, AND HEAT DETECTORS SHALL INITIATE THE FOLLOWING FUNCTIONS.
    - INDICATE THE LOCATION OF THE DEVICE AT THE CONTROL PANEL.
    - CAUSE AN AUDIBLE SIGNAL ON THE CONTROL PANEL AND REMOTE ANNUNCIATOR.
    - TRANSMIT AN AUDIBLE AND VISUAL SIGNAL THROUGHOUT THE BUILDING
    - ALL ELECTROMAGNETIC DOOR LOCKS ARE TO UNLOCK AUTOMATICALLY. DOORS SHALL REMAIN UNLOCKED UNTIL THE FIRE PROTECTION SYSTEM HAS BEEN RESET.
    - ALL HVLS (HIGH VOLUME LOW SPEED) FANS SHALL BE INTERLOCKED TO SHUT DOWN IMMEDIATELY UPON RECEIVING A WATERFLOW SIGNAL
    - AN ALARM SIGNAL SHALL BE SENT TO A REMOTE SUPERVISING STATION (PROVIDED BY OTHERS)
  - ANY COMPROMISE (OPENS, SHORTS OR GROUNDS) IN THE SYSTEM DEVICES OR WIRING SHALL INITIATE THE FOLLOWING:
    - INDICATE THE LOCATION OF THE DEVICE COMPROMISED AT THE CONTROL PANEL.
    - CAUSE AN AUDIBLE "TROUBLE SIGNAL" AT THE CONTROL PANEL
    - THE DIALER WILL DIAL THE REMOTE SUPERVISING STATION WHO WILL THEN CALL THE APPROPRIATE CUSTOMER CONTACT AND SERVICING CONTRACTOR.
  - ACTIVATION OF DUCT DETECTORS SHALL INITIATE THE FOLLOWING FUNCTIONS.
    - INDICATE THE LOCATION OF THE DEVICE AT THE CONTROL PANEL.
    - CAUSE A "SUPERVISORY" SIGNAL ON THE CONTROL PANEL
    - TRANSMIT A SIGNAL TO INITIATE AIR HANDLER SHUTDOWN. WHERE OUTSIDE AIR HANDLER SYSTEM IS REQUIRED, SHUT DOWN OUTSIDE AIR HANDLER UNIT.
    - THE DIALER WILL DIAL THE REMOTE SUPERVISING STATION WHO WILL THEN CALL THE APPROPRIATE CUSTOMER CONTACT AND SERVICING CONTRACTOR.
  - ACTIVATION OF ANY SYSTEM TAMPER SWITCHES OR LOW SYSTEM AIR PRESSURE SHALL INITIATE THE FOLLOWING FUNCTIONS.
    - INDICATE THE LOCATION OF THE DEVICE AT THE CONTROL PANEL.
    - CAUSE A "SUPERVISORY" SIGNAL ON THE CONTROL PANEL
    - THE DIALER WILL DIAL THE REMOTE SUPERVISING STATION WHO WILL THEN CALL THE APPROPRIATE CUSTOMER CONTACT AND SERVICING CONTRACTOR.

**FIRE ALARM REQUIREMENTS:**

- OWNER REQUIREMENTS:**
- CARBON MONOXIDE ALARM MONITORING IS REQUIRED BY THE OWNER.
- AHU REQUIREMENTS (NORTH COLLIER FIRE RESCUE DISTRICT):**
- AN EXTERIOR WEATHERPROOF AUDIO-VISUAL DEVICE IS REQUIRED PER NORTH COLLIER FIRE CONTROL AND RESCUE DISTRICT POLICY FAL 17-03.
  - ALL ABOVEGROUND VALVES OR PIVS THAT CONTROL WATER EXCLUSIVELY SUPPLYING A FIRE SPRINKLER SYSTEM SHALL BE ELECTRICALLY MONITORED. NORTH COLLIER FIRE CONTROL AND RESCUE DISTRICT POLICY TSPK 21-01.
  - A BUILDING WITH A FIRE ALARM SYSTEM WHERE ONLY 1 MANUAL PULL STATION IS REQUIRED: THE PULL STATION SHOULD BE LOCATED IN THE INTERIOR OF THE BUILDING WITHIN 5' OF THE MAIN ENTRANCE/EXIT.
  - A SEPARATE PERMIT FOR FIRE ALARM MONITORING IS REQUIRED PRIOR TO APPROVAL AND ISSUANCE OF THE FIRE ALARM PERMIT.

**GENERAL FIRE ALARM NOTES:**

- THIS BUILDING IS TO BE PROTECTED BY A MANUAL/AUTOMATIC ADDRESSABLE FIRE SYSTEM WITH BACK UP BATTERY DESIGNED TO MEET THE REQUIREMENTS OF THE LOCAL JURISDICTION.
- SYSTEM SHALL BE REMOTE STATION MONITORED WITH 24 HOURS OF STANDBY BATTERY AND 5 MINUTES OF ALARM.
- ALL WIRING SHALL BE INSTALLED IN 3/4" EMT CONDUIT. FIRE ALARM METAL ARMORED CABLE IS ACCEPTABLE IN LIEU OF CONDUIT.
- ALL AUDIO VISUAL DEVICES SHALL BE MOUNTED 84" ABOVE FINISHED GROUND TO THE BOTTOM OF THE JUNCTION BOX.
- ALL MANUAL PULL STATIONS ARE TO BE MOUNTED 46" ABOVE FINISHED FLOOR. PER NFPA 72
- ALL DETECTOR INSTALLATION AND PLACEMENTS SHALL COMPLY WITH NFPA 72 REQUIREMENTS.
- REFER TO THIS SHEET FOR GENERAL LEGENDS AND SYMBOLS.
- INTERIOR COMBINATION HORN/STROBE LOCATIONS TO BE EITHER WALL OR CEILING MOUNTED. ALL EXTERIOR SPEAKER STROBE LOCATIONS TO BE WALL MOUNTED
- EXACT LOCATION OF THE FIRE ALARM CONTROL PANEL AND REMOTE ANNUNCIATOR PANEL SHALL BE COORDINATED WITH THE ARCHITECT AND OWNER
- THE FIRE ALARM SYSTEM IS DESIGNED TO PROVIDE A GENERAL EVACUATION SIGNAL.
- FIRE ALARM SYSTEM WIRING SHALL CONSIST OF CLASS B CIRCUITS WITH PATHWAY SURVIVABILITY LEVEL 1.
- THE REQUIREMENTS OF 61G15-32.008(4)(j), (k) OR (l) ARE NOT APPLICABLE TO THIS PROJECT.
- ONLY ONE MANUAL PULL STATION IS REQUIRED TO INITIATE A FIRE ALARM SIGNAL DUE TO AUTOMATIC FIRE SPRINKLER SYSTEM. COORDINATE FINAL LOCATION OF MANUAL PULL STATION WITH THE AHJ. PER FBC 907.2.
- COORDINATE WITH ARCHITECTURAL PLANS FOR FINAL OCCUPANCY LOAD CALCULATIONS.

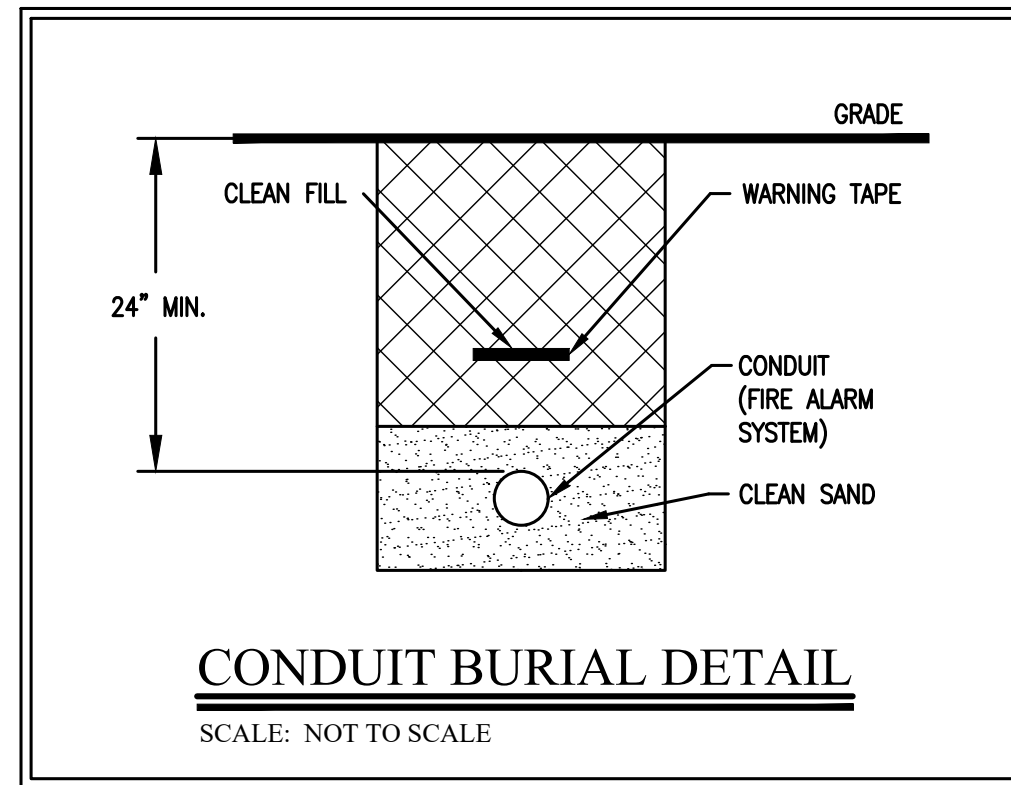
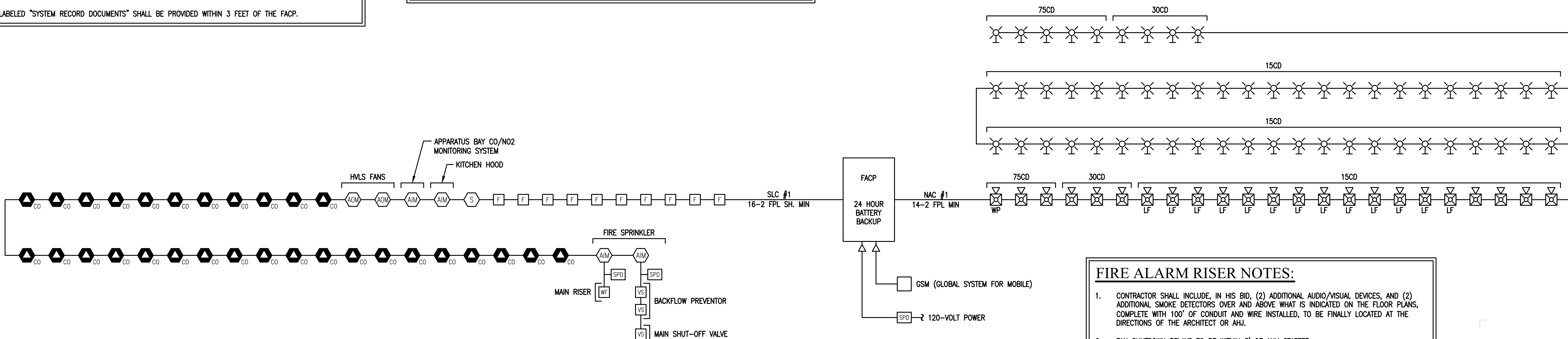


TABLE 904 REQUIRED SEPARATION OF OCCUPANCIES (hours)

OCCUPANCY	ALD, E	U, S, L, S	S2	SI	SI	F-2, F-3, S-2, U, S, F-1, S-1, S-1	S-1	S-2	U, S, H, S-1
ALD, E	0	0	0	0	0	0	0	0	0
U, S, L, S	0	0	0	0	0	0	0	0	0
S2	0	0	0	0	0	0	0	0	0
SI	0	0	0	0	0	0	0	0	0
F-2, F-3, S-2, U, S, F-1, S-1, S-1	0	0	0	0	0	0	0	0	0
S-1	0	0	0	0	0	0	0	0	0
S-2	0	0	0	0	0	0	0	0	0
U, S, H, S-1	0	0	0	0	0	0	0	0	0



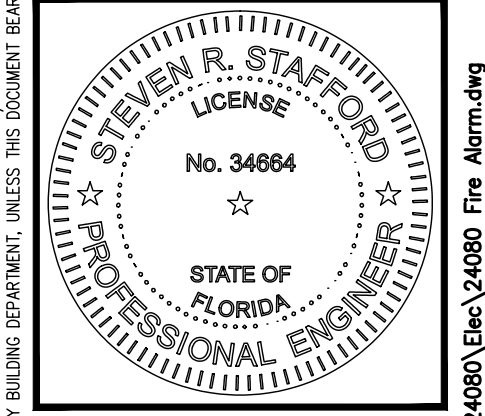
- FIRE ALARM RISER NOTES:**
- CONTRACTOR SHALL INCLUDE, IN HIS BID, (2) ADDITIONAL AUDIO/VISUAL DEVICES, AND (2) ADDITIONAL SMOKE DETECTORS OVER AND ABOVE WHAT IS INDICATED ON THE FLOOR PLANS, COMPLETE WITH 100' OF CONDUIT AND WIRE INSTALLED, TO BE FINALLY LOCATED AT THE DIRECTIONS OF THE ARCHITECT OR AHJ.
  - FAN SHUTDOWN RELAYS TO BE WITHIN 3' OF AHU STARTER.
  - LOCATE THE SMOKE DETECTOR TEST STATIONS IN THE SAME LOCATIONS THE FIRE ALARM CONTROL PANEL OR AS DIRECTED BY THE FIRE DEPARTMENT.
  - ALL SURGE SUPPRESSION DEVICES (SPD) MUST BE INSTALLED IN AIR CONDITIONED SPACE.

**FIRE ALARM RISER DIAGRAM**  
SCALE: NOT TO SCALE

PROJECT NAME:  
**North Collier Fire Control & Rescue Station #49**  
Cochatchee Road  
Naples, FL 34110

**STAFFORD ENGINEERING, INC.**  
3625 Bonita Beach Rd., Suite 111, Bonita Springs, FL 34134  
239-948-5841 / 239-948-5990 FAX  
www.staffordengineering.com  
Steven R. Stafford - PE - Florida License # 34664  
Certificate of Authorization No. 26464

ISSUED FOR BID	SEPTEMBER 30, 2025
ISSUED FOR PERMIT	AUGUST 11, 2025
#	REVISION / DATE

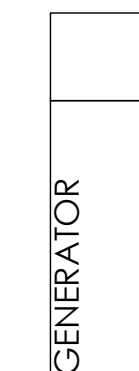
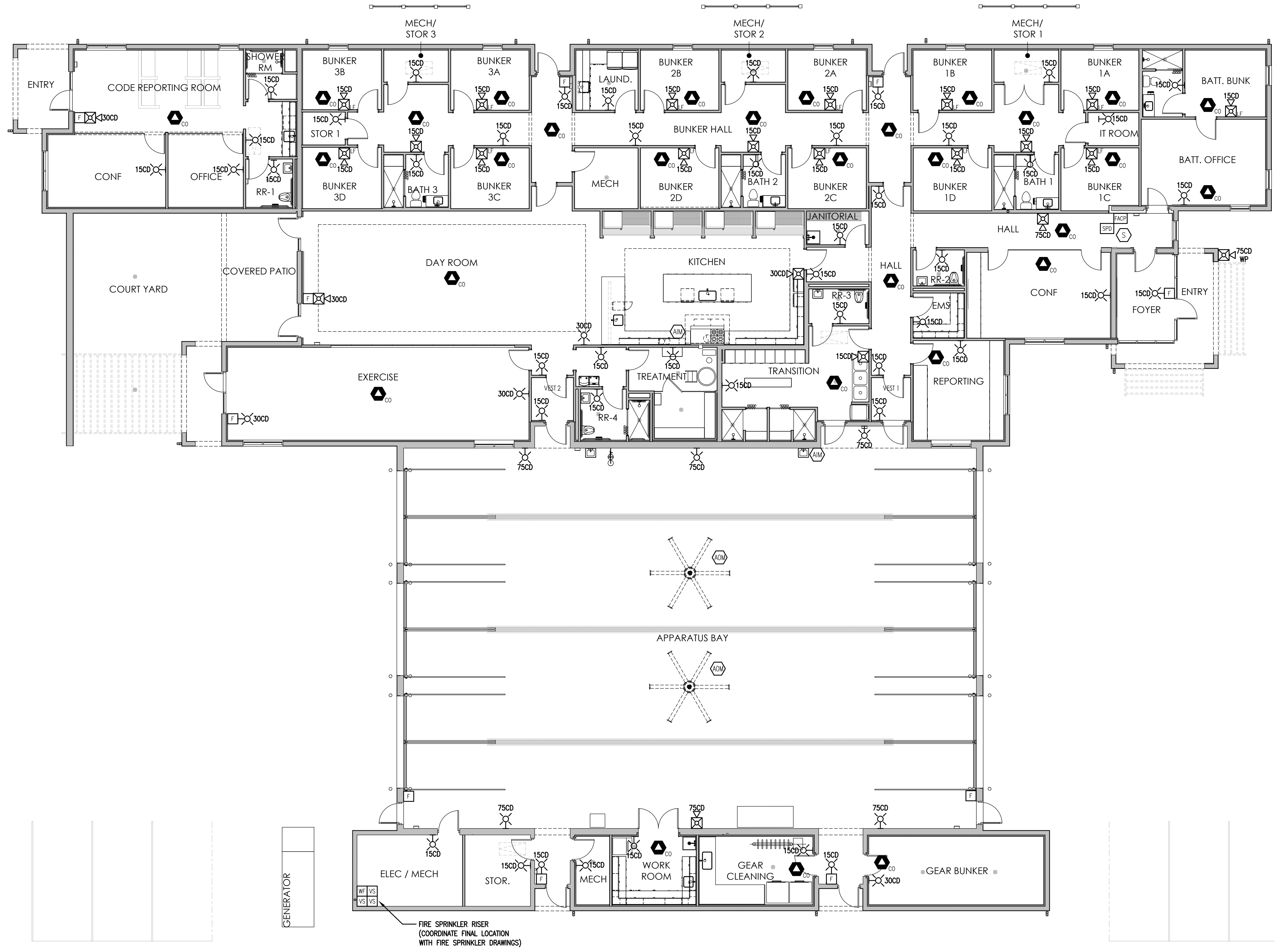
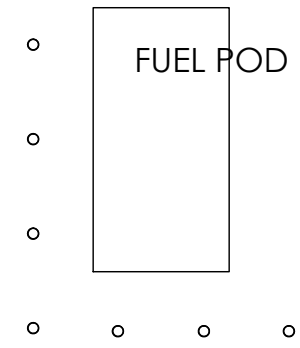
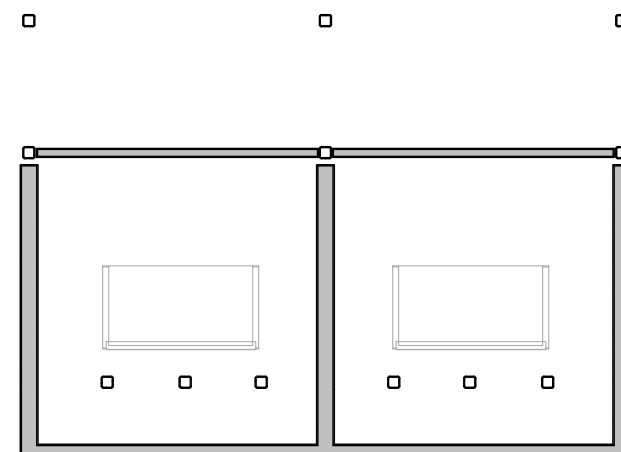


DATE:	08/11/25
DRAWN BY:	R.A.M.
CHECKED BY:	S.R.S.
JOB NUMBER:	24080

**FA0.1**

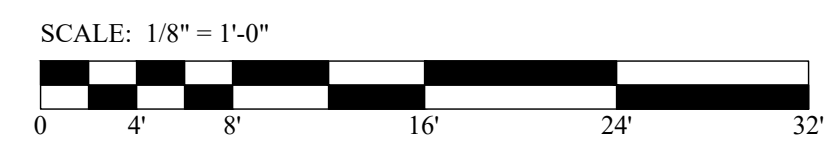
THIS DESIGN AND THE DRAWINGS THEREOF, PREPARED FOR THIS PROJECT, ARE THE PROPERTY OF THE ENGINEER, STAFFORD ENGINEERING, INC. AND THE DESIGN AND/OR DRAWINGS MAY NOT BE USED IN WHOLE OR IN PART FOR ANY USE OTHER THAN THAT FOR WHICH THE ORIGINAL PROJECT FOR WHICH THE DESIGN AND/OR DRAWINGS WERE PREPARED, WITHOUT EXPRESSED WRITTEN PERMISSION OF THE ENGINEER, STAFFORD ENGINEERING, INC. NO BUILDING PERMIT SHALL BE ISSUED BY ANY BUILDING DEPARTMENT, UNLESS THE DOCUMENT BEARS THE ORIGINAL SEAL AND SIGNATURE OF THE ENGINEER, STAFFORD ENGINEERING, INC.

10/7/2025 12:18 PM © Working Projects 24080 Fire Alarm  
THIS ITEM HAS BEEN ELECTRONICALLY SIGNED AND SEALED BY STEVEN R. STAFFORD ON DATE INDICATED ON DIGITAL SIGNATURE.  
PRINTED COPIES OF THIS DOCUMENT ARE NOT CONSIDERED SIGNED AND SEALED AND THE SIGNATURE MUST BE VERIFIED ON ANY ELECTRONIC COPIES.

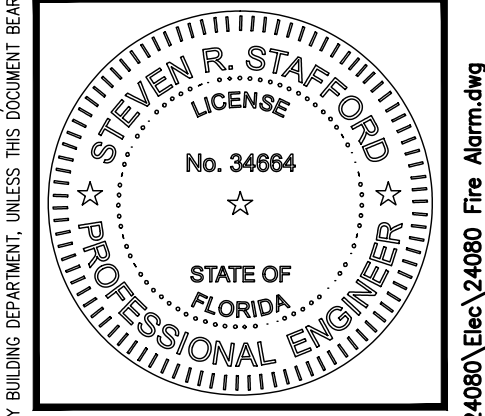


FIRE SPRINKLER RISER  
(COORDINATE FINAL LOCATION  
WITH FIRE SPRINKLER DRAWINGS)

**OVERALL FIRE ALARM PLAN**  
SCALE: 1/8" = 1'-0"



THIS PERSON AND THE DRAWINGS HEREBY PREPARED FOR THIS PROJECT ARE THE PROPERTY OF THE ENGINEER, STAFFORD ENGINEERING, INC. AND THE DESIGN AND/OR DRAWINGS MAY NOT BE USED IN WHOLE OR IN PART FOR ANY USE OTHER THAN THAT FOR WHICH THE ORIGINAL PROJECT FOR WHICH THE DESIGN AND/OR DRAWINGS WERE PREPARED, WITHOUT EXPRESS WRITTEN PERMISSION OF THE ENGINEER, STAFFORD ENGINEERING, INC. NO BUILDING PERMIT SHALL BE ISSUED BY ANY BUILDING DEPARTMENT, UNLESS THIS DOCUMENT BEARS THE ORIGINAL SEAL AND SIGNATURE OF THE ENGINEER, STAFFORD ENGINEERING, INC.



DATE:	08/11/25
DRAWN BY:	R.A.M.
CHECKED BY:	S.R.S.
JOB NUMBER:	24080

**FA1.1**

**STAFFORD ENGINEERING, INC.**  
3525 Bonita Beach Rd., Suite 111, Bonita Springs, FL 34134  
239-948-5841 / 239-948-5990 FAX  
www.staffordengineering.com  
Steven R. Stafford - P.E. - Florida License # 34664  
Certificate Of Authorization No. 26464

PROJECT NAME:  
**North Collier Fire Control & Rescue Station #49**  
Cocohatchee Road  
Naples, FL 34110

ISSUED FOR BID	SEPTEMBER 30, 2025
ISSUED FOR PERMIT	AUGUST 11, 2025
#	REVISION / DATE

10/7/2025 12:18 PM C:\Working Projects\24080\Draw\24080 Fire Alarm.dwg  
THIS DRAWING HAS BEEN ELECTRONICALLY SIGNED AND SEALED BY STEVEN R. STAFFORD ON DATE INDICATED ON DIGITAL SIGNATURE.  
PRINTED COPIES OF THIS DOCUMENT ARE NOT CONSIDERED SIGNED AND SEALED AND THE SIGNATURE MUST BE VERIFIED ON ANY ELECTRONIC COPIES.

