

## NOTES AND SPECIFICATIONS

1. THE PLUMBING CONTRACTOR SHALL COMPLY WITH THE 2023 FLORIDA BUILDING, PLUMBING, 8TH EDITION, THE STATE OF FLORIDA ENERGY CODE, AND ALL LOCAL CODES AS MAY BE APPLICABLE. SIX SHOP DRAWING SUBMITTALS OF ALL MAJOR EQUIPMENT SHALL BE REQUIRED FOR APPROVAL PRIOR TO ORDERING AND PROCUREMENT OF SAME.
2. PLUMBING PLANS ARE DIAGRAMMATIC ONLY. THEY ARE INTENDED TO INDICATE CAPACITY, SIZE, LOCATION, DIRECTION AND GENERAL ARRANGEMENT. WHERE NOT SPECIFICALLY SHOWN ON PLANS, CONTRACTOR SHALL APPLY PROFESSIONAL STANDARDS SUCH AS THAT OF THE AMERICAN SOCIETY OF SANITATION ENGINEERS.
3. WORK SHALL INCLUDE ALL LABOR, MATERIALS, PERMITS AND OTHER COSTS AS ARE NECESSARY FOR THE INSTALLATION OF A COMPLETE AND SATISFACTORY OPERATIONAL PLUMBING AND SANITARY SYSTEM.
4. THIS CONTRACTOR SHALL COORDINATE WITH THE OTHER CONTRACTORS TO INSURE THAT EACH TRADE SHALL HAVE SUFFICIENT SPACE TO INSTALL THEIR EQUIPMENT (DUCTWORK, PIPING, ELECTRICAL, ETC.).
5. FIELD VERIFY ALL DIMENSIONS.
6. UNLESS NOTED, ALL MATERIALS SHALL BE NEW, COMPLETE, INCLUDE MANUFACTURER'S WARRANTY, AND BE U.L. APPROVED IF APPLICABLE. ALL WORK SHALL PRESENT A NEAT MECHANICAL APPEARANCE WHEN COMPLETED.
7. CONTRACTOR SHALL VERIFY ELEVATION OF UTILITY CONNECTIONS ON SITE PRIOR TO COMMENCING WORK.
8. BURIED PIPING SHALL BE INSTALLED A MINIMUM OF 18" AWAY FROM BUILDING FOUNDATIONS. PIPING ROUTED THROUGH FOUNDATIONS SHALL BE SLEEVED AND INSTALLED IN ACCORDANCE WITH THE AMERICAN SOCIETY OF SANITATION ENGINEERS STANDARDS.
9. PLUMBING SYSTEM INSTALLER SHALL PROVIDE ALL STRUCTURAL MEMBERS, SUPPORT BRACKETS, STRAPS, HANGERS, FLASHING, HARDWARE, ETC., REQUIRED TO INSTALL A COMPLETE APPROVED SYSTEM.
10. DRAIN WASTE PIPING SHALL BE SCHEDULE 40 PVC WHEN INSTALLED BELOW GRADE OR UNDER CONCRETE SLABS. VENT PIPING SHALL BE SCHEDULE 40 PVC.
11. FURNISH AND INSTALL CPVC, COPPER OR PEX SUPPLY LINES FOR ALL HOT AND COLD WATER.
12. PLUMBING CONTRACTOR SHALL CERTIFY ALL WATER PIPING AND SPECIALTIES FREE FROM MICROBIAL CONTAMINATION BY SANITIZING THE PLUMBING SYSTEM BEFORE OCCUPATION OF BUILDING.
13. PROVIDE STOP OR ANGLE VALVE ON EACH WATER CONNECTION TO EACH PLUMBING FIXTURE.
14. PROVIDE ALL REQUIRED HAMMER ARRESTORS.
15. PROVIDE AND INSTALL FLUSH WITH GRADE CLEAN OUT AT EXIT OF BUILDING. PROVIDE AND INSTALL CLEAN OUT AT THE FOOT OF ALL SANITARY RISERS.
16. FINAL CONNECTION TO SITE UTILITIES SHALL BE BY PLUMBING CONTRACTOR.
18. WHERE MANUFACTURER AND CATALOG NUMBER HAS BEEN SPECIFIED, SUBSTITUTIONS OF EQUALS WILL ONLY BE CONSIDERED IF SUBMITTED 10 DAYS PRIOR TO BID. SUBSTITUTIONS ARE NOT GUARANTEED TO BE APPROVED.
19. ALL HOT WATER SUPPLY AND RETURN PIPING SHALL BE INSULATED WITH FLEXIBLE ELASTOMERIC INSULATION.
20. VERIFY INCOMING DOMESTIC WATER & SANITARY LINES SIZES PRIOR TO COMMENCING WORK.

## GENERAL NOTES

1. CONTRACTOR SHALL INSPECT AND FIELD MEASURE EXISTING CONDITIONS PRIOR TO SUBMITTING PROPOSAL.
2. THE CONTRACT AMOUNT SHALL INCLUDE COST OF ALL LABOR, MATERIAL, EQUIPMENT, CONNECTIONS, ACCESSORIES, ETC. REQUIRED FOR A COMPLETE, PROPER, AND CODE-COMPLIANT ASSEMBLY OF THE WORK INDICATED.
3. LOCATE UTILITIES PRIOR TO START OF CONSTRUCTION.
4. FIELD COORDINATE ANY REQUIRED DIMENSIONAL ADJUSTMENTS.
5. CONFINE DEMOLITION AND CONSTRUCTION ACTIVITIES TO DESIGNATED WORK AREAS.
6. PROVIDE BARRICADES AND DUST CONTROL MEASURES TO ISOLATE WORK AREAS FROM OCCUPIED AREAS.
7. REPLACE OR REPAIR ANY EXISTING MATERIALS, FINISHES, EQUIPMENT, LAWN, ETC. DAMAGED BY CONSTRUCTION OPERATIONS.

## GAS PIPING SPECIFICATION

1. PROJECT SCOPE INCLUDES THE INSTALLATION OF GAS DISTRIBUTION SYSTEM INCLUDING REQUIRED SHUT-OFF/CONTROL VALVES AND FINAL CONNECTION TO GAS FIRE EQUIPMENT.
2. SEE GAS GENERATOR FUEL CONSUMPTION SCHEDULE FOR TOTAL CONNECTED LOAD.
3. MEDIUM PRESSURE GAS PIPING SIZE AND PRESSURE SHALL BE DETERMINED BY GAS PROVIDER.
4. ALL REQUIRED GAS PIPING TO NATURAL GAS SHALL BE PERFORMED BY A LICENSED CONTRACTOR. THE CONTRACTOR SHALL INSTALL ALL THE REQUIRED PIPING TO THE GAS APPLIANCES ACCORDING TO THE SIZES LISTED ON THE DRAWING, AND IN ACCORDANCE WITH THE CURRENT GEORGIA BUILDING CODE, FUEL GAS WITH ALL APPLICABLE AMENDMENTS.
5. WHERE GAS PIPING IS PASSING THROUGH AN OUTSIDE WALL, THE PIPING SHALL ALSO BE PROTECTED AGAINST CORROSION BY COATING OR WRAPPING WITH AN INERT MATERIAL. WHERE PIPING IS ENCASED IN A PROTECTIVE PIPE SLEEVE, THE ANNULAR SPACE BETWEEN THE PIPING AND THE SLEEVE SHALL BE SEALED.
6. A DRIP LEG SHALL BE PROVIDED AT ANY POINT IN THE LINE OF PIPE WHERE CONDENSATE COULD COLLECT.
7. ALL GAS PIPING SHALL BE FINISHED WITH A RUST INHIBITING PRIMER, COLOR CODED FINISH, AND IDENTIFICATION LABELS.
8. ALL NATURAL GAS PIPE SIZES AND MATERIALS SHALL COMPLY WITH THE FLORIDA BUILDING CODE 7th EDITION FUEL GAS 2020.
9. ALL WORK SHALL BE IN FULL COMPLIANCE WITH ALL CODES, ORDINANCES, RULES, ORDERS AND OTHER LEGAL REQUIREMENTS OF THE PUBLIC AUTHORITIES WHICH BEAR ON THE PERFORMANCE OF THIS WORK, INCLUDING BUT NOT LIMITED TO THE 2013 NFPA 110, 2015 NFPA 54, AND THE FLORIDA BUILDING CODE 7th EDITION 2020.
10. SECURE ALL NATURAL GAS PIPING, VALVES, METER, ETC. TO COMPLY WITH THE WIND-LOAD REQUIREMENTS OF THE FLORIDA BUILDING CODE 7TH EDITION 2020.
11. PROVIDE IMPACT PROTECTIVE HOUSING FOR THE NATURAL GAS METER AND VALVES LOCATED ABOVE GROUND IN COMPLIANCE WITH FLORIDA BUILDING CODE 6th EDITION 2017, CHAPTER 450.
12. PROVIDE GENERATOR ENCLOSURE HAS BEEN APPROVED BY THE MIAMI-DADE REQUIREMENTS (SEE ATTACHMENT)

## PLUMBING FIXTURE SCHEDULE

(LISTED MANUFACTURER OR APPROVED EQUAL)

MARK	FIXTURE	MANUFACTURER / MODEL	MATERIAL	ACCESSORIES	CW	HW	TRAP	SAN	NOTES
WC	WATER CLOSET (FLUSH VALVE) ADA-COMPLIANT	KOHLER "HIGHCLIFF ULTRA" #K-96057, 12" ROUGH-IN #K-13516 FLUSH VALVE	VITREOUS CHINA	SEAT: KOHLER #K-4666, WHITE, ELONGATED OPEN FRONT, LESS COVER, WITH CHECK HINGE	1"	---	INTEGRAL	3"	1, 2
WC-1	WATER CLOSET ADA-COMPLIANT	KOHLER KINGSTON K-26077 12" ROUGH-IN	VITREOUS CHINA	SEAT: KOHLER LUSTRA K-46705A, WHITE, ELONGATED OPEN FRONT, LESS COVER, WITH CHECK HINGE	1/2"	---	INTEGRAL	3"	---
LAV	LAVATORY INTEGRATED ADA-COMPLIANT	CORIAN INTEGRATED #8254 LAVATORY, RECTANGULAR BATHROOM SINK	ACRYLIC-POLYESTER	FAUCET: KOHLER #K-15182-4DRA-CP DRAIN: KOHLER #K-8998	1/2"	1/2"	1-1/2"	2"	4
UR	URINAL	KOHLER "STANWELL" #K-4972-ET SLOAN ROYAL #180-1ES-S LOW CONSUMPTION FLUSH VALVE	VITREOUS CHINA	CARRIER: ZURN #1222	3/4"	---	INTEGRAL	2"	1
KS	1 COMPARTMENT SINK 33" x 22"	KOHLER "VAULT" #K-3821-1	STAINLESS STEEL	FAUCET: KOHLER #K-22973-CP DRAIN: ELKAY #LK99	1/2"	1/2"	1-1/2"	2"	---
HS	1 COMPARTMENT SINK 21" x 22"	KOHLER "LYRIC" #K-RH23377-1PC	STAINLESS STEEL	FAUCET: KOHLER #K-22973-CP DRAIN: ELKAY #LK99	1/2"	1/2"	1-1/2"	2"	---
MS	MOP SINK CORNER WITH ANGLED FRONT 24" x 24" x 12"	STERN-WILLIAMS "CORNBARO" #SBC-1500	TERRAZZO WITH STAINLESS STEEL FRONT CAP	FAUCET: #F-10-VB HOSE & WALL HOOKS: #F-35 MOP HANGER: #F-40 DRAIN GASKET: #TC-3 SPLASH PANELS: #BP	3/4"	3/4"	3"	3"	---
LS	LAUNDRY SINK 25" x 22"	KOHLER "BALLAD" #K-5798-1	STAINLESS STEEL	FAUCET: KOHLER #K-22035-CP PULLOUT DRAIN-ELKAY #LK99	1/2"	1/2"	1-1/2"	2"	---
FD	FLOOR DRAIN SQUARE TOP ROUND TOP	SIoux CHIEF "FINISH LINE" #832-36PNQ #832-36PNR	NICKEL BRONZE TOP, ABS BODY	TRAP PRIMER CONNECTION AND HEEL-PROOF STRAINER	---	---	---	3"	---
FD	FLOOR DRAIN ROUND TOP	SIoux CHIEF "FINISH LINE" #832-36PNR	NICKEL BRONZE TOP, ABS BODY	TRAP PRIMER CONNECTION AND HEEL-PROOF STRAINER	---	---	---	3"	---
FS	FLOOR SINK SQUARE TOP ROUND TOP	SIoux CHIEF 861 SERIES	NICKEL BRONZE TOP, ABS BODY		---	---	---	2"	5
SHR SHR-1	SHOWER VALVE AND DRAIN. STALL BY OTHERS	VALVE: PROFLO #PF2820CP DRAIN: PROFLO #PF42801	CHROME PLATED METALLIC FAUCET PVC DRAIN	PRESSURE BALANCE VALVE WITH 2 GPM SHOWER HEAD PVC WITH ROUND SS STRAINER	1/2"	1/2"	2"	2"	
WCO	WALL CLEANOUT		STAINLESS STEEL WITH BRASS PLUG	---	---	---	---	PIPE SIZE	---
FCO	FLOOR CLEANOUT ROUND TOP	SIoux CHIEF "FINISH LINE" #834-4PNR	NICKEL BRONZE TOP, ABS BODY	PVC BASE ADAPTER	---	---	---	PIPE SIZE	---
AAV	AIR ADMITTANCE VALVE	STUDOR: MINI VENT MAXI VENT		PROVIDE WITH VENTED ACCESS PANEL WHEN INSTALLED WITHIN WALL CAVITY	---	---	---	PIPE SIZE	---
AP	FLUSH MOUNTED ACCESS PANEL WALL BOX AND FRAME.	PROFLO #PFAAVBX	METAL GRILL FACEPLATE	---	---	---	---	---	---
HB	HOSE BIB WITH LOOSE KEY HANDLE	MANUF.: WOODFORD #24P-1/2	BRASS EXTERIOR POLYCARBONATE WHEEL HANDLE	ANTI-SIPHON, HOSE CONNECTION VACUUM BREAKER	1/2"	---	---	---	---
FCO	FLOOR CLEANOUT SQUARE TOP	SIoux CHIEF "FINISH LINE" #834-4PNQ	NICKEL BRONZE TOP, ABS BODY	PVC BASE ADAPTER	---	---	---	PIPE SIZE	---
TD	TRENCH DRAIN	ZURN #Z886-HD	HDPE	---	---	3"	---	3"	---
WMB	WASHING MACHINE VALVE BOX	---	CPVC VALVE CONNECTION	PLASTIC TRIM RING AND WATER HAMMER ARRESTOR	1/2"	1/2"	2"	3"	
RHB	SINGLE VALVE RECESSED HOSE BOX	BRADLEY 7910		16 GAUGE, TYPE 304 STAINLESS STEEL.	1/2"	---	---	---	6
EWC	ELECTRIC WATER COOLER, 2 LEVEL, ADA COMPLIANT, BOTTLE FILLER	ELKAY # LMABFL8WSSK	STAINLESS STEEL	WALL PLATE AND CARRIER BOTTLE FILLER WATER FILTER SYSTEM	1/2"	---	1-1/2"	2"	2

### NOTES:

1. FINAL FIXTURE COLOR SELECTION BY INTERIOR DESIGNER OR OWNER
2. EWC SHALL BE MOUNTED ACCORDING TO THE ADA COMPLIANT (HEIGHT)
3. PROVIDE WITH FLOOR-MOUNT CONCEALED ARM CARRIER SUPPORT. SMITH, ZURN, OR APPROVED EQUAL
4. ADD TEMPERED WATER DEVICE PER ASSE 1070 BY ZURN MODEL # ZW1017XL OR ZW1070XL OR SIMILAR
5. INDIRECT DRAIN FOR THE COLD PLUNGE.
6. COLD PLUNGE TUB FILLER.

## LEGEND

DESCRIPTION	SYMBOLS
VENT PIPES	-----
SANITARY SEWER PIPES ( ROUGH-IN PLUMBING )	-----
COLD WATER PLUMBING PIPES	-----
HOT WATER PLUMBING PIPES	-----
HOT WATER RECIRCULATION PLUMBING PIPES	-----
GAS PLUMBING PIPES	----- GAS ----- GAS ----- GAS ----- GAS ----- GAS ----- GAS -----
PIPE PENETRATION THRU FINISHED FLOOR	
POINT OF CONNECTION WITH EXISTING	
TRAP PRIMER	
WATER HAMMER ARRESTOR	TP

## GAS WATER HEATER SCHEDULE

MARK	DESCRIPTION	MANUFACTURER	MODEL	QUANTITY	BTU'S/HR	CW	HW	ENERGY FACTOR
GWH	GAS WATER HEATER	A.O. SMITH	ACT 1990-N	4	15,000-199,000	3/4"	3/4"	0.96
NOTES: (LISTED MANUFACTURER OR APPROVED EQUAL)								

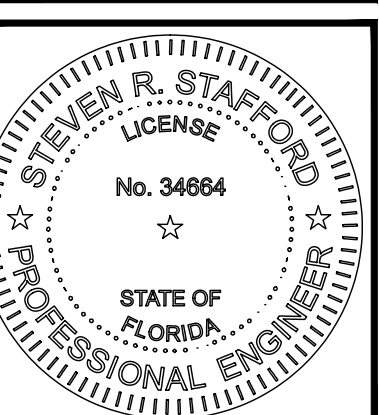
## RETURN CIRCULATING PUMP SCHEDULE

MARK	DESCRIPTION	MANUFACTURER	SERIES / MODEL	CAPACITY (GPM)	DEVELOPED HEAD FT OF WATER	MOTOR HP	MOTOR RPM	VOLTAGE
RCP-1	IN-LINE CIRCULATOR (GENERAL FACILITY)	BELL & GOSSETT	SERIES PL PL-55	15	25	2/5	3250	115 / 1#
NOTES: MAXIMUM WORKING PRESSURE -- 125 PSI (LISTED MANUFACTURER OR APPROVED EQUAL)								

PROJECT NAME:  
**North Collier Fire Control & Rescue Station #49**  
 Cochatchee Road  
 Naples, FL 34110

**STAFFORD ENGINEERING, INC.**  
 3525 Bonita Beach Rd., Suite 111, Bonita Springs, FL 34134  
 239-948-5841 / 239-948-5990 FAX  
 www.staffordengineeringinc.com  
 Steven R. Stafford - PE - Florida License # 34864  
 Certificate Of Authorization No. 26464

ISSUED FOR BID	SEPTEMBER 30, 2025
ISSUED FOR PERMIT	AUGUST 11, 2025
#	REVISION / DATE



DATE:	08/11/25
DRAWN BY:	R.A.M.
CHECKED BY:	S.R.S.
JOB NUMBER:	24080

# P0.1

THIS DESIGN AND THE DRAWINGS HEREOF, PREPARED FOR THIS PROJECT, ARE THE PROPERTY OF THE ENGINEER, STAFFORD ENGINEERING, INC. AND THE DESIGN AND/OR DRAWINGS MAY NOT BE USED IN WHOLE OR IN PART FOR ANY USE OTHER THAN FOR THE ORIGINAL PROJECT FOR WHICH THE DESIGN AND/OR DRAWINGS WERE PREPARED, WITHOUT EXPRESS WRITTEN PERMISSION OF THE ENGINEER, STAFFORD ENGINEERING, INC. NO BILLING FEE WILL BE CHARGED FOR THIS DOCUMENT BEYOND THE ORIGINAL SEAL AND SIGNATURE OF THE ENGINEER, STAFFORD ENGINEERING, INC.

10/7/2025 12:22 PM C:\Working Projects\24080\Plumbing\24080\_Plumbing.dwg  
 THIS ITEM HAS BEEN ELECTRONICALLY SIGNED AND SEALED BY STEVEN R. STAFFORD ON DATE INDICATED ON DIGITAL SIGNATURE.  
 PRINTED COPIES OF THIS DOCUMENT ARE NOT CONSIDERED SIGNED AND SEALED AND THE SIGNATURE MUST BE VERIFIED ON ANY ELECTRONIC COPIES.

### PLUMBING FIXTURE DEMAND TABULATION

Project Name: NORTH COLLIER FIRE STATION #49 (BUILDING) BUILDING TYPE: NEW  
 Project No.: 24080 PREDOMINANTLY: FLUSH VALVE  
 Date: August 9, 2025

FIXTURE	DESCRIPTION	OCCUPANCY	QTY.	DRAINAGE FIXTURE UNITS	SUB- TOTAL	LOAD VALUES, (EACH) IN WATERLOAD VALUES (TOTAL), IN WATER SUPPLY FIXTURE UNITS (WSFU) SUPPLY FIXTURE UNITS (WSFU)			LOAD VALUES, (EACH) IN WATERLOAD VALUES (TOTAL), IN WATER SUPPLY FIXTURE UNITS (WSFU) SUPPLY FIXTURE UNITS (WSFU)			Remarks
						COLD	HOT	TOTAL	COLD	HOT	TOTAL	
WC	Water Closet, Flush Tank, 1.6 GPF	Private	4	3	12	2.2	-	2.2	8.8	0	8.8	
WC-1	Water Closet, Flush Valve, 1.6 GPF	Private	4	4	16	6.0	-	6.0	24	0	24	
LAV	Lavatory, Countertop	Private	8	1	8	0.5	0.5	0.7	4	4	5.6	
SHR	Shower, HC	Private	8	2	16	1.0	1.0	1.4	8	8	11.2	
3 Comp. Sink	Kitchen Sink	Hotel, Restaurant	2	2	4	3.0	3.0	4.0	6	6	8	
HS	Hand Sink,	Private	4	2	8	1.0	1.0	1.4	4	4	5.6	
EWS	Eyes wash Station	Private	1	1	1	0.5	0.5	0.7	0.5	0.5	0.7	
LS	Laundry Sink	Private	1	2	2	1.0	1.0	1.4	1	1	1.4	
MS	Mop (Service) Sink	Offices, etc.	1	2	2	2.25	2.25	3.0	2.25	2.25	3	
DW	Dishwashing Machine	Private	2	2	4	-	1.4	1.4	0	2.8	2.8	
EWC	Electric Water Cooler (Drinking Fountain)	Offices, etc.	1	0.5	0.5	0.25	-	0.25	0.25	0	0.25	
IMB	Ice Maker Valve Box - (Refrigerator / Ice Maker)	Public or Private	1	0	0	0.25	-	0.25	0.25	0	0.25	
WMB	Washing Machine Box (8 lb)	Private	2	2	4	1.0	1.0	1.4	2	2	2.8	
WMB	Equipments	Public	4	2	8	3.0	3.0	4.0	12	12	16	
FD	Floor Drain - General / Restroom		10	2	20	0.0	0.0	0.0	0	0	0	
FD2	Floor Drain - Mechanical Rooms/Floor sink		5	2	10	0.0	0.0	0.0	0	0	0	
HB	Hose Bibb	Public or Private	9	0	0	2.0	-	2.0	18	0	18	

TOTALS  
 DFU = DRAINAGE FIXTURE UNITS 115.5 DFU EIGHTH 91.05 42.55 108.4 WSFU  
 INCH SLOPE PER FOOT 64.6 47.0 69.8 GPM  
 DIAMETER OF PIPE (INCHES) 4 1-1/2" 1-1/2" 1-1/2" INCHES REQ'D  
 WSFU = WATER SUPPLY FIXTURE UNITS

### OIL SEPARATOR CALCULATION:

TOTAL AREA.....+/- 4919 SF.

1003.4.2.2 GARAGES AND SERVICE STATIONS WHERE AUTOMOBILES ARE SERVICED, GREASED, REPAIRED OR WASHED OR WHERE GASOLINE IS DISPENSED, OIL SEPARATORS SHALL HAVE A CAPACITY OF NOT LESS THAN 6 CUBIC FEET (0.168 M3) FOR THE FIRST 100 SQUARE FEET (9.3 M2) OF AREA TO BE DRAINED, PLUS 1 CUBIC FOOT (0.028 M3) FOR EACH ADDITIONAL 100 SQUARE FEET (9.3 M2) OF AREA TO BE DRAINED INTO THE SEPARATOR. PARKING GARAGES IN WHICH SERVICING, REPAIRING OR WASHING IS NOT CONDUCTED, AND IN WHICH GASOLINE IS NOT DISPENSED, SHALL NOT REQUIRE A SEPARATOR. AREAS OF COMMERCIAL GARAGES UTILIZED ONLY FOR STORAGE OF AUTOMOBILES ARE NOT REQUIRED TO BE DRAINED THROUGH A SEPARATOR.

TOTAL CUBIT FEET.....54 CUBIT FEET  
 1 FT<sup>3</sup> = 7.48 GALLONS.  
 54 FT<sup>3</sup> X 7.48 = 403.92 GALLONS.  
 OIL SEPARATOR TOTAL CAPACITY.....500 GALLONS  
 OIL WATER TECHNOLOGIES, LLC MODEL

### GENERAC SG250/250KW GENERATOR FUEL CONSUMPTION RATES

NATURAL GAS FT<sup>3</sup>/HR (M<sub>3</sub>/HR)

PERCENT LOAD	NATURAL GAS FT <sup>3</sup> /HR (M <sub>3</sub> /HR)
25%	1020 (28.9)
50%	1620 (45.9)
75%	2520 (71.4)
100%	3180 (90.0)

\* FUEL SUPPLY MUST ACCOMMODATE FUEL CONSUMPTION RATES AT 100% LOAD.

GAS EQUIPMENT	CONNECTED LOAD ( FT <sup>3</sup> /HR )
GENERATOR SG250	3180
TOTAL LOAD (GENERATOR + 20%)	3816
TOTAL LENGTH:	+/- 100 FEET
PIPE SIZE:	2-1/2" INCHES

GAS PIPING SIZE PER 2023 FBC FUEL GAS 8th EDITION, TABLE 402.4(4)

A. INLET PRESSURE 2.0 PSI OR LESS  
 B. SPECIFIC GRAVITY 0.6  
 E. PRESSURE DROP 6.0 IN WC

DEVELOPED LENGTH BETWEEN CONNECTIONS INCLUDES FITTING AND VALVES (SCHEDULE 40 METALIC PIPE).

### EQUIPMENT GAS LOAD CALCULATION

CONN. NO.	DESCRIPTION	QTY	GAS CONNECTION	BTU'S/HR	TOTAL BTU'S/HR
GWH	GAS WATER HEATER	3	3/4"	199,000	597,000
N	RANGE, STOCK POT	1	1"	238,000	238,000
GG	FUTURE GAS GRILL	1	1/2"	50,000	50,000

TOTAL LOAD 885,000 BTU'/HR  
 TOTAL LENGTH 854.2 CUBIT-FEET/HR  
 +/- 300 FT  
 PIPE SIZE 1-1/4"

GAS PIPING SIZE PER 2023 FBC FUEL GAS (8TH EDITION), TABLE 402.4(4)  
 A. PRESSURE DROP 6.0 INCH WATER COLUMN  
 B. SPECIFIC GRAVITY 0.6  
 E. INLET PRESSURE 2.0 PSI OR LESS  
 DEVELOPED LENGTH BETWEEN CONNECTIONS INCLUDES FITTING AND VALVES.  
 PROVIDE THE APPROPRIATE TERMINATION (CAP) FOR REMOVED GAS EQUIPMENTS. ADJUST NEW CONNECTION FOR RELOCATED GAS EQUIPMENTS. VERIFY EXISTING CONNECTION CONDITIONS PRIOR THE RELOCATION

GWH	GAS WATER HEATER	1	3/4"	199,000	199,000
TOTAL LOAD	199,000 BTU'/HR				
TOTAL LENGTH	191.8 CUBIT-FEET/HR				
PIPE SIZE	+/- 50 FT				
PIPE SIZE	3/4"				

GAS PIPING SIZE PER 2020 FBC FUEL GAS (7TH EDITION), TABLE 402.4(4)  
 A. PRESSURE DROP 6.0 INCH WATER COLUMN  
 B. SPECIFIC GRAVITY 0.6  
 E. INLET PRESSURE 2.0 PSI OR LESS  
 DEVELOPED LENGTH BETWEEN CONNECTIONS INCLUDES FITTING AND VALVES.  
 PROVIDE THE APPROPRIATE TERMINATION (CAP) FOR REMOVED GAS EQUIPMENTS. ADJUST NEW CONNECTION FOR RELOCATED GAS EQUIPMENTS. VERIFY EXISTING CONNECTION CONDITIONS PRIOR THE RELOCATION

PROJECT NAME:  
**North Collier Fire Control  
& Rescue Station #49**  
 Cocohatchee Road  
 Naples, FL 34110

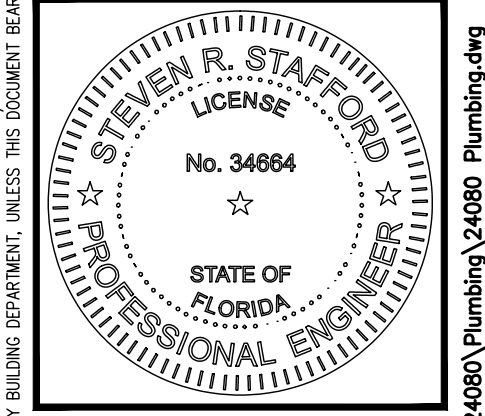
**STAFFORD  
ENGINEERING,  
INC.**

3525 Bonita Beach Rd., Suite 111, Bonita Springs, FL 34134  
 239-948-5841 / 239-948-5990 FAX  
 www.staffordengineeringinc.com

Steven R. Stafford - PE - Florida License # 34664  
 Certificate Of Authorization No. 26464

ISSUED FOR BID  
 SEPTEMBER 30, 2025  
 ISSUED FOR PERMIT  
 AUGUST 11, 2025

# REVISION / DATE

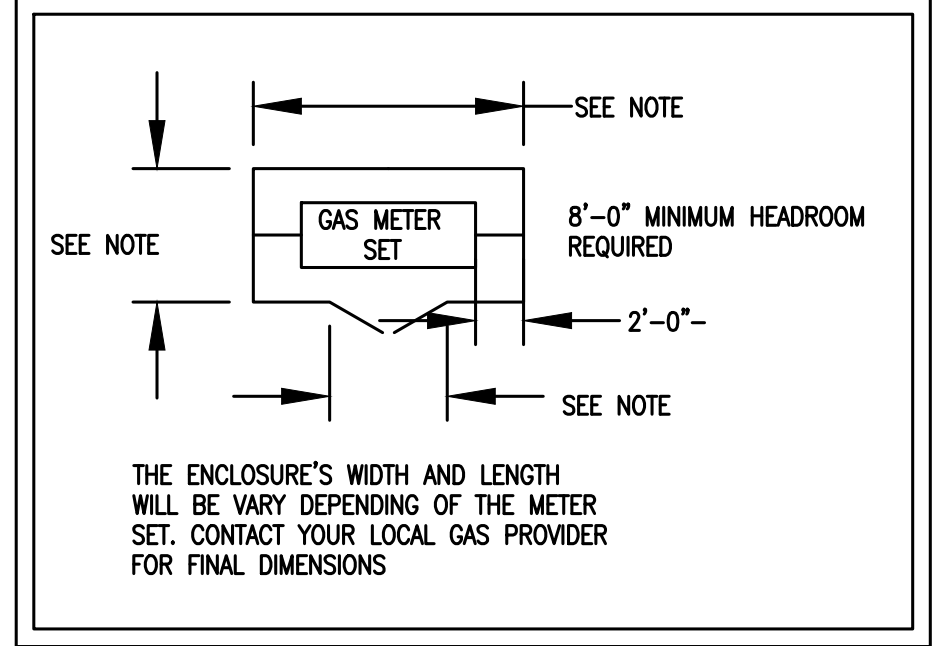
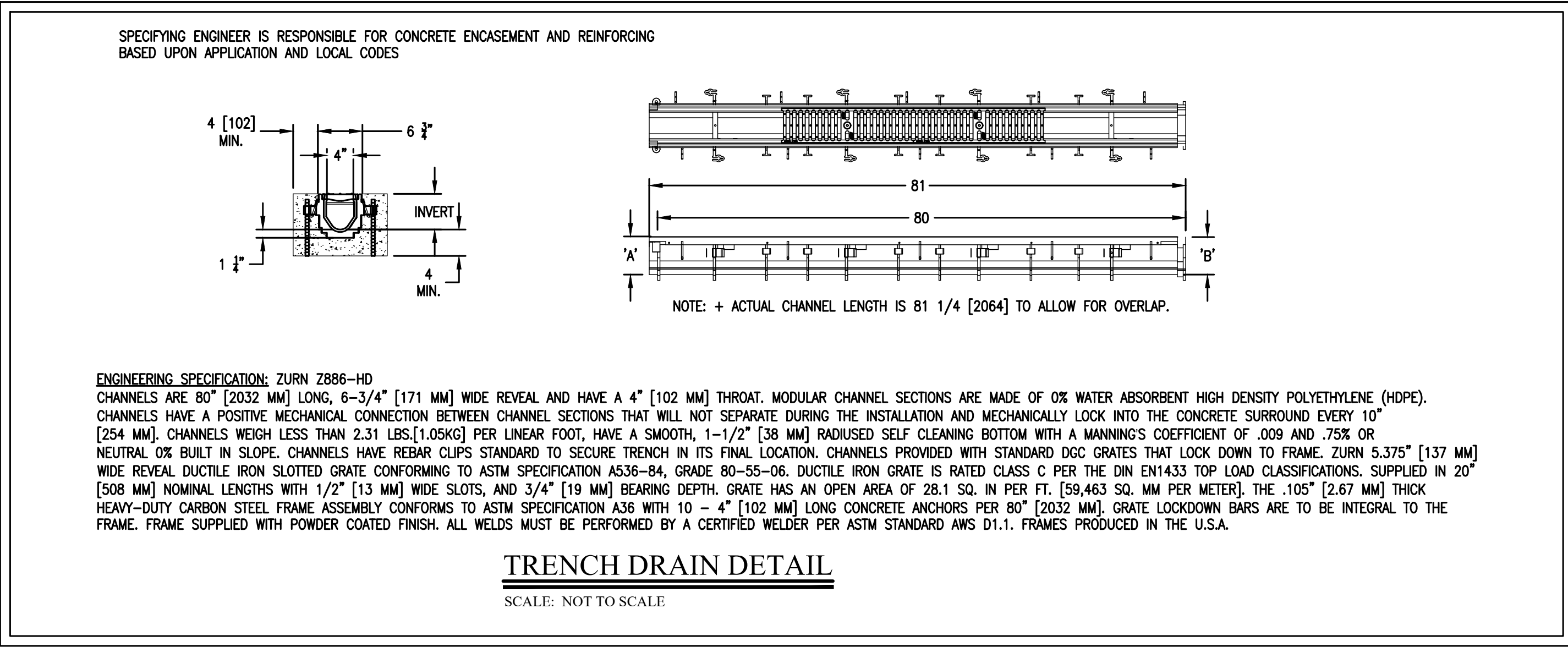
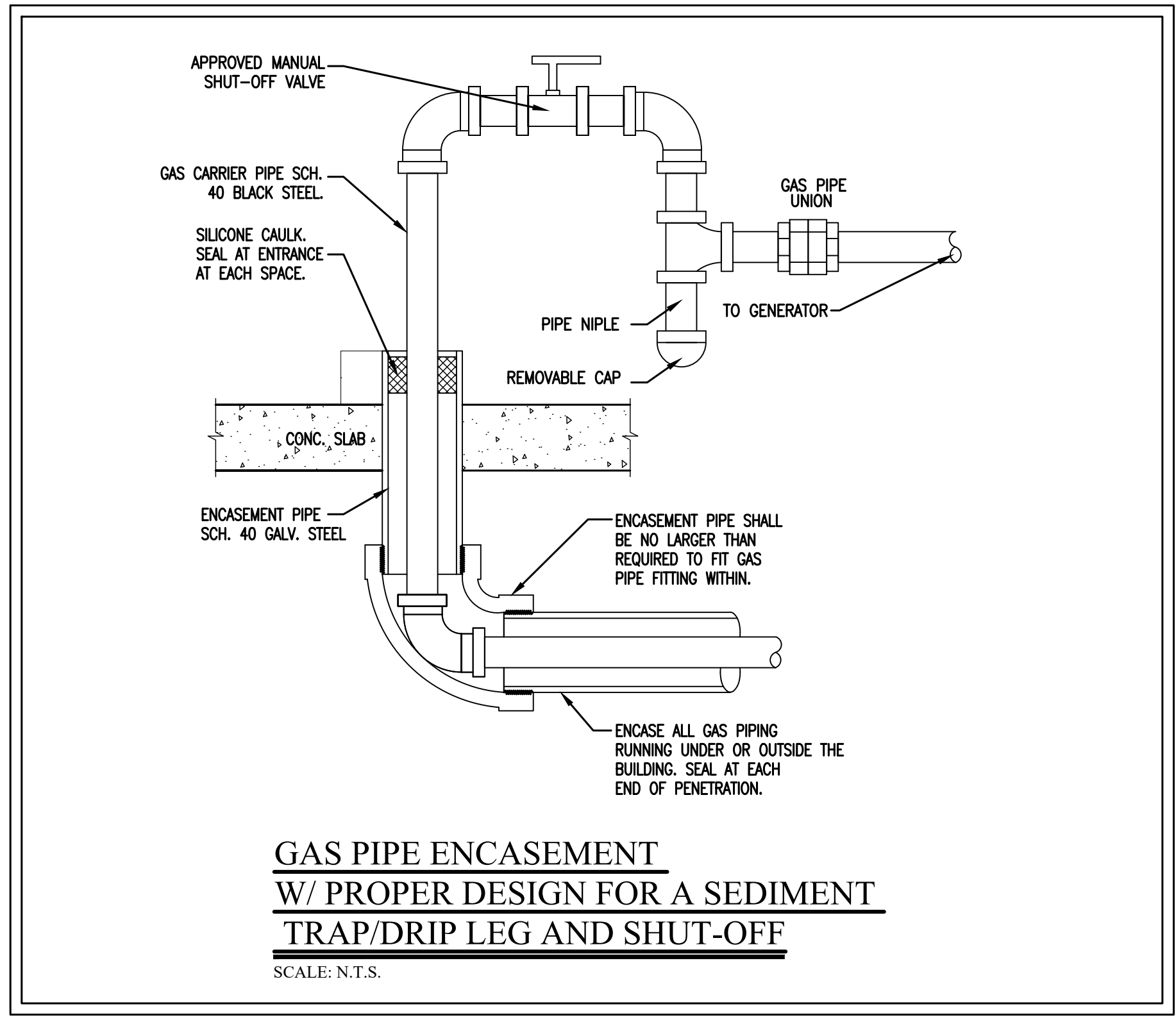
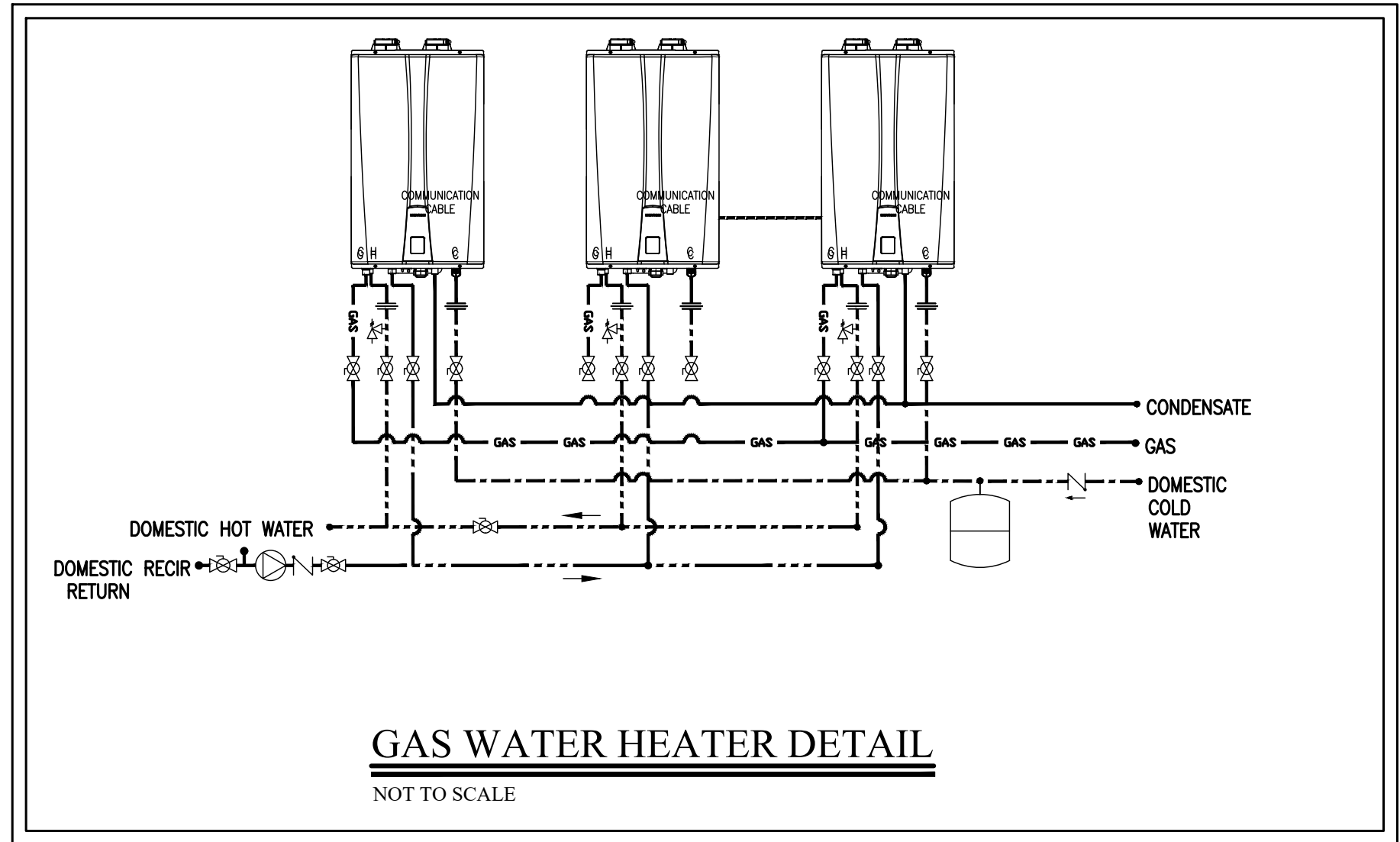
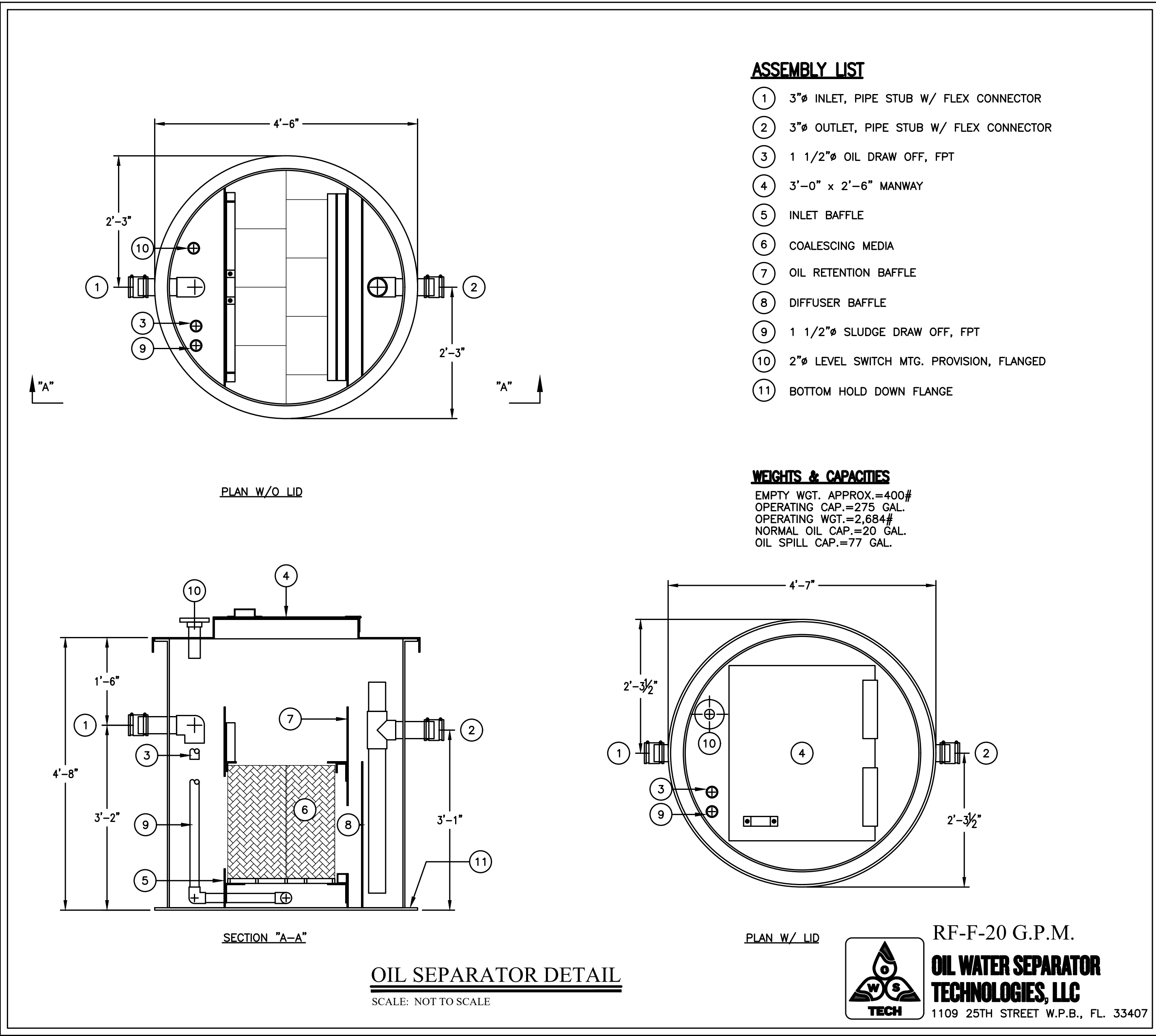


DATE: 08/11/25  
 DRAWN BY: R.A.M.  
 CHECKED BY: S.R.S.  
 JOB NUMBER: 24080

# P0.2

THIS DESIGN AND THE DRAWINGS THEREOF ARE THE PROPERTY OF STAFFORD ENGINEERING, INC. AND THE DESIGN AND/OR DRAWINGS MAY NOT BE USED IN WHOLE OR IN PART FOR ANY OTHER PROJECT FOR WHICH THE DESIGN AND/OR DRAWINGS WERE PREPARED, WITHOUT EXPRESS WRITTEN PERMISSION OF STAFFORD ENGINEERING, INC. NO BILLING FEE SHALL BE ISSUED BY ANY BILLING DEPARTMENT, UNLESS THIS DOCUMENT BEARS THE ORIGINAL SEAL AND SIGNATURE OF THE ENGINEER, STAFFORD ENGINEERING, INC.

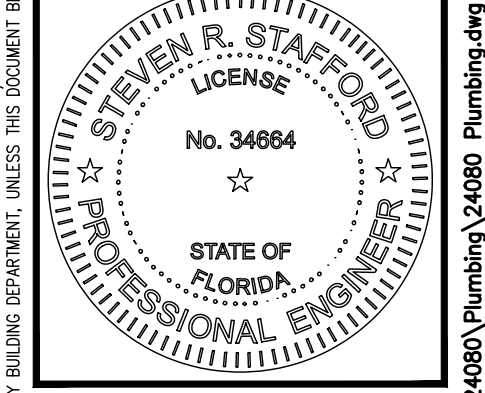
10/7/2025 12:22 PM C:\Working Projects\24080\Plumbing\24080\_Plumbing.dwg  
 THIS DRAWING HAS BEEN ELECTRONICALLY SIGNED AND SEALED BY STEVEN R. STAFFORD ON DATE INDICATED ON DIGITAL SIGNATURE.  
 PRINTED COPIES OF THIS DOCUMENT ARE NOT CONSIDERED SIGNED AND SEALED AND THE SIGNATURE MUST BE VERIFIED ON ANY ELECTRONIC COPIES.



PROJECT NAME:  
**North Collier Fire Control & Rescue Station #49**  
 Cocohatchee Road  
 Naples, FL 34110

**STAFFORD ENGINEERING, INC.**  
 3525 Bonita Beach Rd., Suite 111, Bonita Springs, FL 34134  
 239-948-5841 / 239-948-5990 FAX  
 www.staffordengineeringinc.com  
 Steven R. Stafford - P.E. - Florida License # 34664  
 Certificate Of Authorization No. 26464

ISSUED FOR BID	SEPTEMBER 30, 2025
ISSUED FOR PERMIT	AUGUST 11, 2025
#	REVISION / DATE

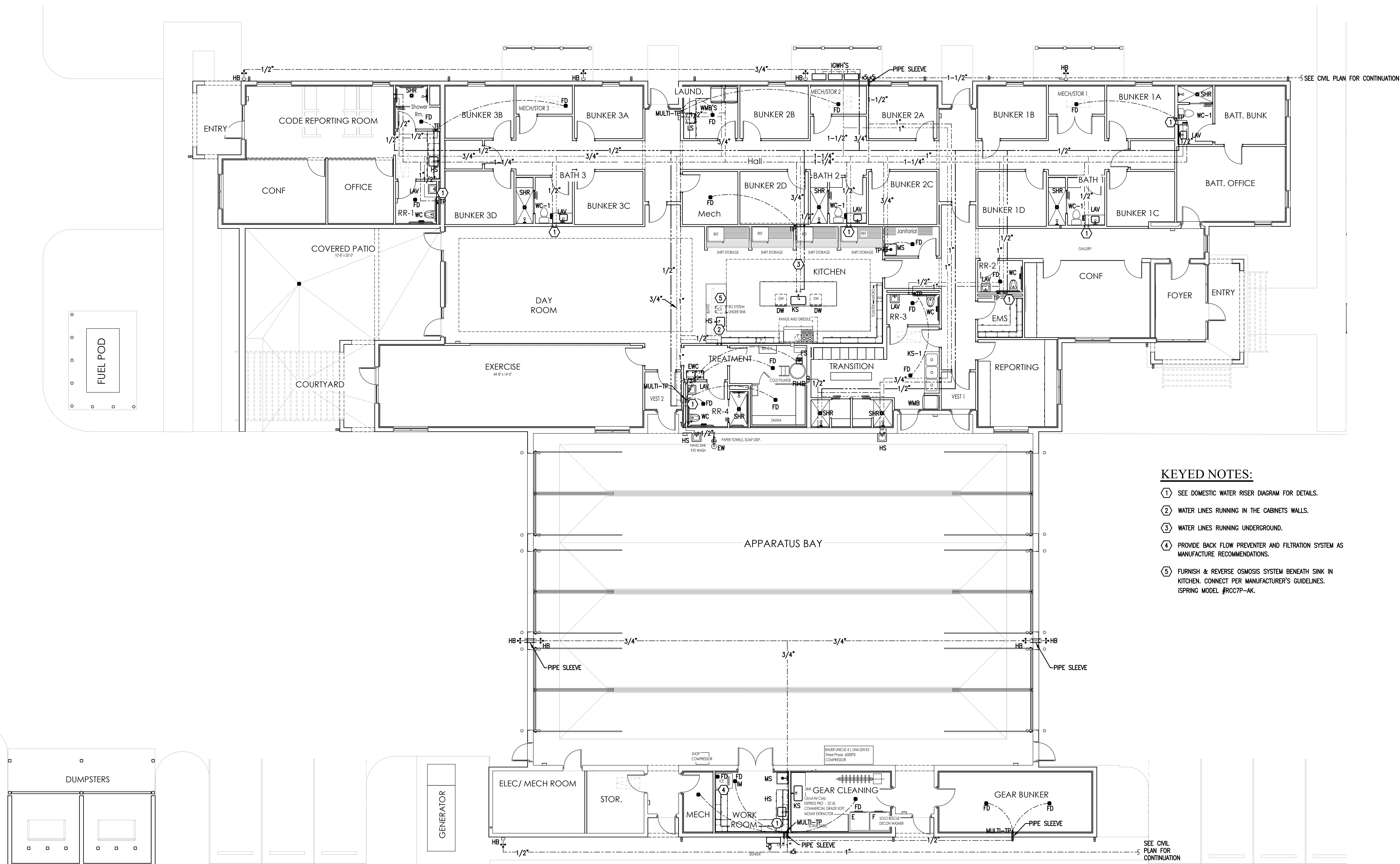


DATE:	08/11/25
DRAWN BY:	R.A.M.
CHECKED BY:	S.R.S.
JOB NUMBER:	24080

**P0.3**

THIS DESIGN AND THE DRAWINGS THEREOF, PREPARED FOR THIS PROJECT, ARE THE PROPERTY OF THE ENGINEER, STAFFORD ENGINEERING, INC. AND THE DESIGN AND/OR DRAWINGS MAY NOT BE USED IN WHOLE OR IN PART FOR ANY OTHER PROJECT FOR WHICH THE ORIGINAL PROJECT FOR WHICH THE DESIGN AND/OR DRAWINGS WERE PREPARED, WITHOUT EXPRESSED WRITTEN PERMISSION OF THE ENGINEER, STAFFORD ENGINEERING, INC. NO BILLING ENTRY SHALL BE ISSUED BY ANY BILLING DEPARTMENT, UNLESS THIS DOCUMENT BEARS THE ORIGINAL SEAL AND SIGNATURE OF THE ENGINEER, STAFFORD ENGINEERING, INC.

10/7/2025 12:22 PM C:\Working Projects\24080\Plumbing.dwg  
 THIS DRAWING HAS BEEN ELECTRONICALLY SIGNED AND SEALED BY STEVEN R. STAFFORD ON DATE INDICATED ON DIGITAL SIGNATURE.  
 PRINTED COPIES OF THIS DOCUMENT ARE NOT CONSIDERED SIGNED AND THE SIGNATURE MUST BE VERIFIED ON ANY ELECTRONIC COPIES.



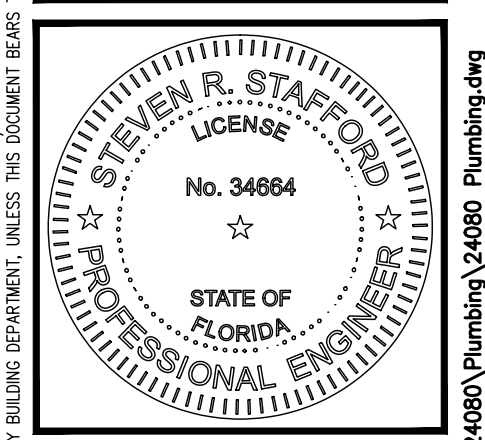
- KEYED NOTES:**
- ① SEE DOMESTIC WATER RISER DIAGRAM FOR DETAILS.
  - ② WATER LINES RUNNING IN THE CABINETS WALLS.
  - ③ WATER LINES RUNNING UNDERGROUND.
  - ④ PROVIDE BACK FLOW PREVENTER AND FILTRATION SYSTEM AS MANUFACTURE RECOMMENDATIONS.
  - ⑤ FURNISH & REVERSE OSMOSIS SYSTEM BENEATH SINK IN KITCHEN. CONNECT PER MANUFACTURE'S GUIDELINES. ISPRING MODEL #RCC7P-AK.

**DOMESTIC WATER PLAN**  
SCALE: 1/8" = 1'-0"

PROJECT NAME:  
**North Collier Fire Control  
& Rescue Station #49**  
Cocohatchee Road  
Naples, FL 34110

**STAFFORD  
ENGINEERING,  
INC.**  
3525 Bonita Beach Rd., Suite 111, Bonita Springs, FL 34134  
239-948-5841 / 239-948-5990 FAX  
www.staffordengineeringinc.com  
Steven R. Stafford - PE - Florida License # 34664  
Certificate Of Authorization No. 26464

ISSUED FOR BID	SEPTEMBER 30, 2025
ISSUED FOR PERMIT	AUGUST 11, 2025
#	REVISION / DATE

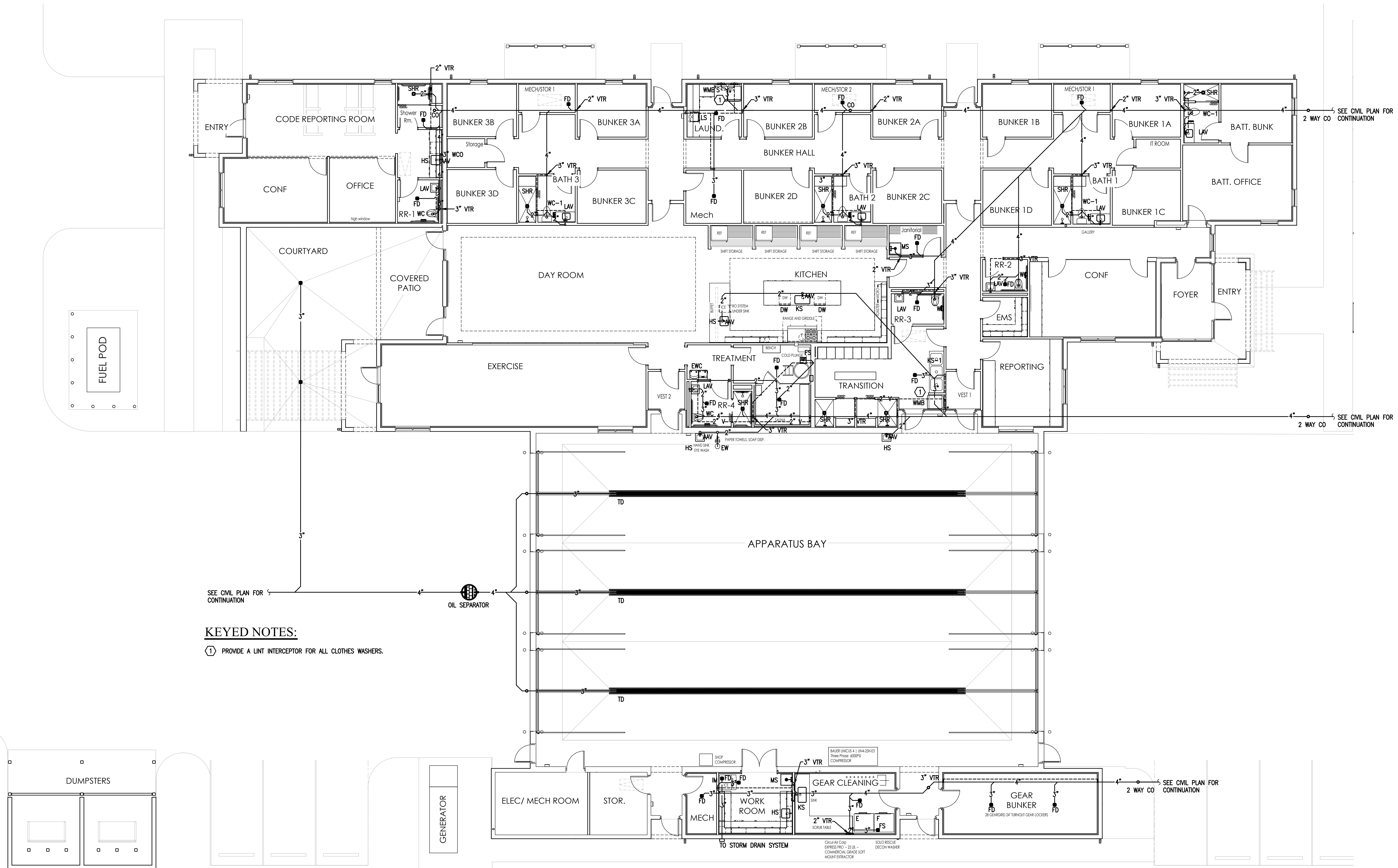


DATE:	08/11/25
DRAWN BY:	R.A.M.
CHECKED BY:	S.R.S.
JOB NUMBER:	24080

**P1.1**

THIS DESIGN AND THE DRAWINGS THEREOF, PREPARED FOR THIS PROJECT, ARE THE PROPERTY OF THE ENGINEER, STAFFORD ENGINEERING, INC. AND THE DESIGN AND/OR DRAWINGS MAY NOT BE USED IN WHOLE OR IN PART FOR ANY OTHER PROJECT FOR WHICH THE DESIGN AND/OR DRAWINGS WERE PREPARED, WITHOUT WRITTEN PERMISSION OF THE ENGINEER, STAFFORD ENGINEERING, INC. NO BUILDING PERMIT SHALL BE ISSUED BY ANY BUILDING DEPARTMENT, UNLESS THIS DOCUMENT BEARS THE ORIGINAL SEAL AND SIGNATURE OF THE ENGINEER, STAFFORD ENGINEERING, INC.

10/7/2025 12:22 PM C:\Working Projects\24080\Plumbing\24080\_Plumbing.dwg  
 THIS DRAWING HAS BEEN ELECTRONICALLY SIGNED AND SEALED BY STEVEN R. STAFFORD ON DATE INDICATED ON DIGITAL SIGNATURE.  
 PRINTED COPIES OF THIS DOCUMENT ARE NOT CONSIDERED SIGNED AND SEALED AND THE SIGNATURE MUST BE VERIFIED ON ANY ELECTRONIC COPIES.



**KEYED NOTES:**

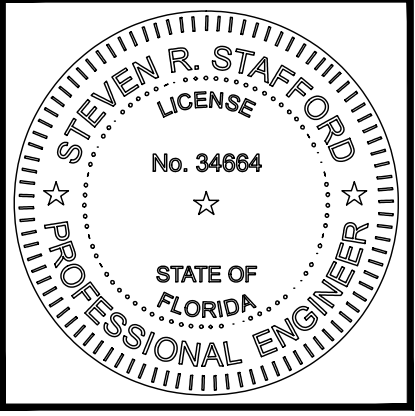
- ① PROVIDE A LINT INTERCEPTOR FOR ALL CLOTHES WASHERS.

**SANITARY PLAN**  
SCALE: 1/8" = 1'-0"

PROJECT NAME:  
**North Collier Fire Control  
& Rescue Station #49**  
Cocohatchee Road  
Naples, FL 34110

**STAFFORD  
ENGINEERING,  
INC.**  
3525 Bonita Beach Rd., Suite 111, Bonita Springs, FL 34134  
239-948-5841 / 239-948-5990 FAX  
www.staffordengineeringinc.com  
Steven R. Stafford - PE - Florida License # 34664  
Certificate of Authorization No. 26464

ISSUED FOR BID	SEPTEMBER 30, 2025
ISSUED FOR PERMIT	AUGUST 11, 2025
#	REVISION / DATE

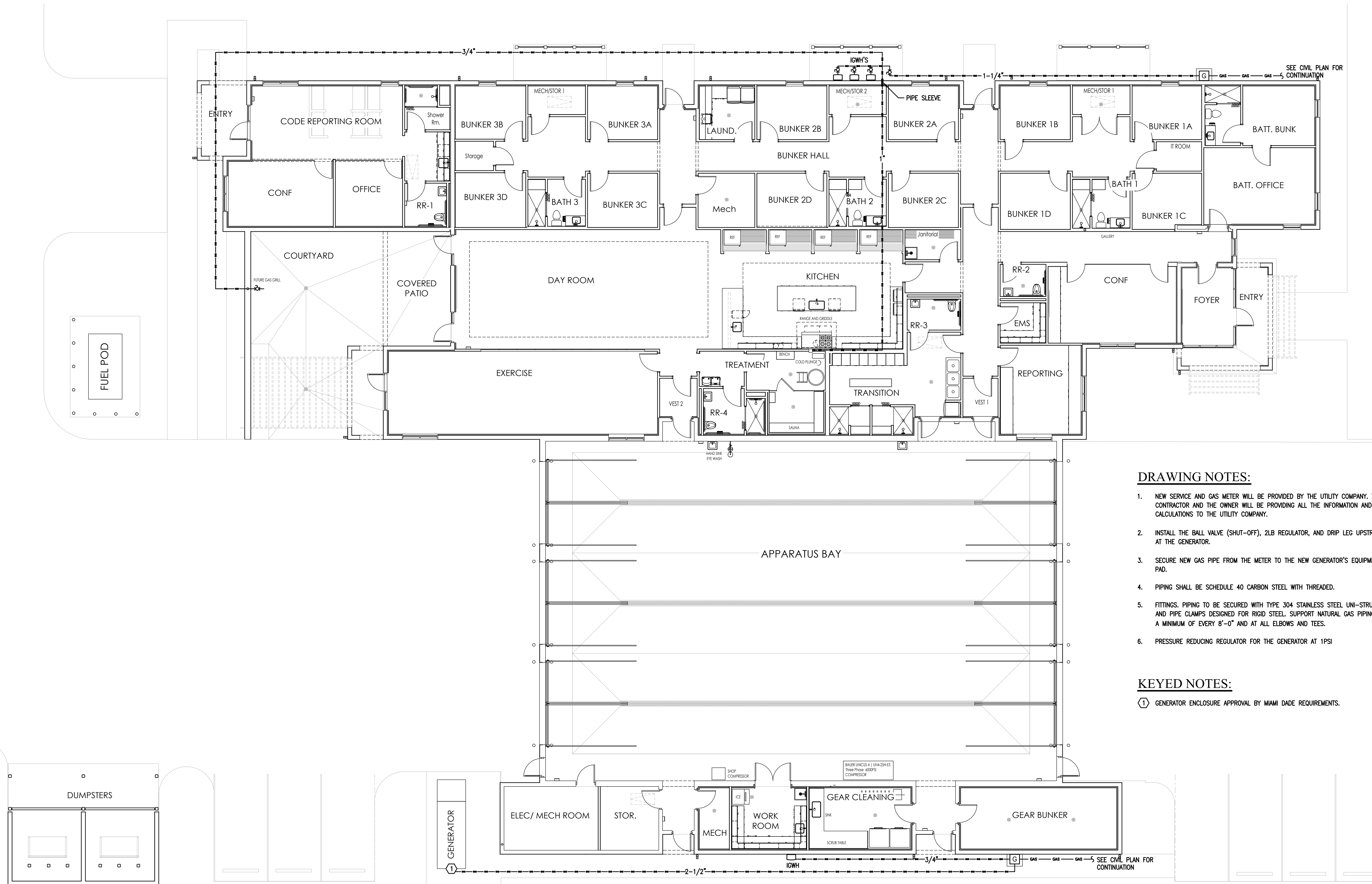


DATE:	08/11/25
DRAWN BY:	R.A.M.
CHECKED BY:	S.R.S.
JOB NUMBER:	24080

**P1.2**

THIS DESIGN AND THE DRAWINGS THEREOF, PREPARED FOR THIS PROJECT, ARE THE PROPERTY OF THE ENGINEER, STAFFORD ENGINEERING, INC. AND THE DESIGN AND/OR DRAWINGS MAY NOT BE USED IN WHOLE OR IN PART FOR ANY OTHER PROJECT FOR WHICH THE DESIGN AND/OR DRAWINGS WERE PREPARED, WITHOUT WRITTEN PERMISSION OF THE ENGINEER, STAFFORD ENGINEERING, INC. NO BLENDING, PHOTOCOPYING, OR REPRODUCING OF ANY KIND IS PERMITTED WITHOUT WRITTEN PERMISSION OF THE ENGINEER, STAFFORD ENGINEERING, INC.

10/7/2025 12:22 PM C:\Working Projects\24080\Plumbing\24080\_Plumbing.dwg  
 THIS DRAWING HAS BEEN ELECTRONICALLY SIGNED AND SEALED BY STEVEN R. STAFFORD ON DATE INDICATED ON DIGITAL SIGNATURE.  
 PRINTED COPIES OF THIS DOCUMENT ARE NOT CONSIDERED SIGNED AND SEALED AND THE SIGNATURE MUST BE VERIFIED ON ANY ELECTRONIC COPIES.



**DRAWING NOTES:**

1. NEW SERVICE AND GAS METER WILL BE PROVIDED BY THE UTILITY COMPANY. THE CONTRACTOR AND THE OWNER WILL BE PROVIDING ALL THE INFORMATION AND CALCULATIONS TO THE UTILITY COMPANY.
2. INSTALL THE BALL VALVE (SHUT-OFF), 2LB REGULATOR, AND DRIP LEG UPSTREAM AT THE GENERATOR.
3. SECURE NEW GAS PIPE FROM THE METER TO THE NEW GENERATOR'S EQUIPMENT PAD.
4. PIPING SHALL BE SCHEDULE 40 CARBON STEEL WITH THREADED.
5. FITTINGS, PIPING TO BE SECURED WITH TYPE 304 STAINLESS STEEL UNI-STRUT AND PIPE CLAMPS DESIGNED FOR RIGID STEEL. SUPPORT NATURAL GAS PIPING AT A MINIMUM OF EVERY 8'-0" AND AT ALL ELBOWS AND TEES.
6. PRESSURE REDUCING REGULATOR FOR THE GENERATOR AT 1PSI

**KEYED NOTES:**

- ① GENERATOR ENCLOSURE APPROVAL BY MIAMI DADE REQUIREMENTS.

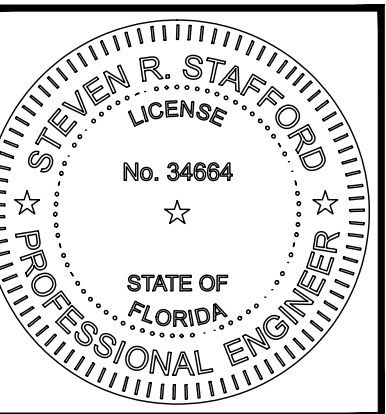
**GAS PLAN**  
SCALE: 1/8" = 1'-0"



PROJECT NAME:  
**North Collier Fire Control  
& Rescue Station #49**  
Cocohatchee Road  
Naples, FL 34110

**STAFFORD  
ENGINEERING,  
INC.**  
3525 Bonita Beach Rd., Suite 111, Bonita Springs, FL 34134  
239-948-5841 / 239-948-5990 FAX  
www.staffordengineeringinc.com  
Steven R. Stafford - PE - Florida License # 34664  
Certificate of Authorization No. 26464

ISSUED FOR BID	SEPTEMBER 30, 2025
ISSUED FOR PERMIT	AUGUST 11, 2025
#	REVISION / DATE

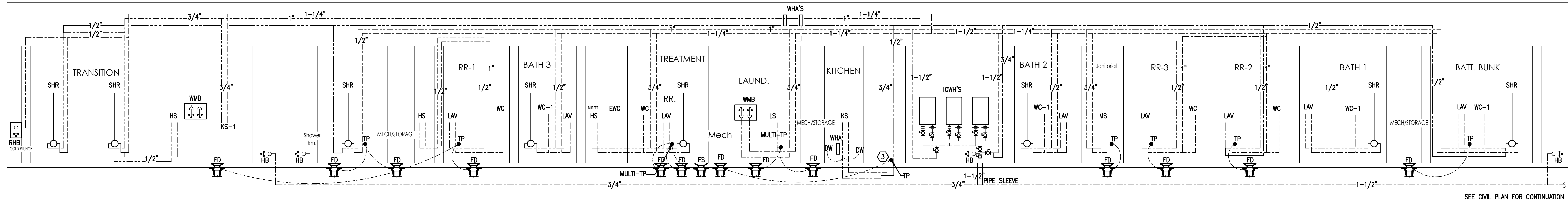


DATE:	08/11/25
DRAWN BY:	R.A.M.
CHECKED BY:	S.R.S.
JOB NUMBER:	24080

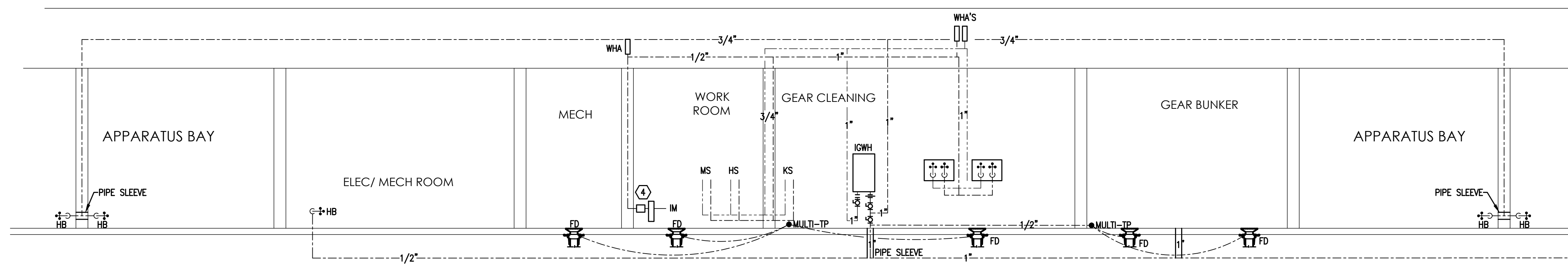
**P1.3**

THIS DESIGN AND THE DRAWINGS THEREOF, PREPARED FOR THIS PROJECT, ARE THE PROPERTY OF THE ENGINEER, STAFFORD ENGINEERING, INC. AND THE DESIGN AND/OR DRAWINGS MAY NOT BE USED IN WHOLE OR IN PART FOR ANY USE OTHER THAN THAT FOR WHICH THE PROJECT WAS DESIGNED AND/OR DRAWINGS WERE PREPARED, WITHOUT WRITTEN PERMISSION OF THE ENGINEER, STAFFORD ENGINEERING, INC. NO BUILDING PERMIT SHALL BE ISSUED BY ANY BUILDING DEPARTMENT, UNLESS THIS DOCUMENT BEARS THE ORIGINAL SEAL AND SIGNATURE OF THE ENGINEER, STAFFORD ENGINEERING, INC.

10/7/2025 12:22 PM C:\Working Projects\24080\Plumbing\24080\_Plumbing.dwg  
 THIS DRAWING HAS BEEN ELECTRONICALLY SIGNED AND SEALED BY STEVEN R. STAFFORD ON DATE INDICATED ON DIGITAL SIGNATURE.  
 PRINTED COPIES OF THIS DOCUMENT ARE NOT CONSIDERED SIGNED AND SEALED AND THE SIGNATURE MUST BE VERIFIED ON ANY ELECTRONIC COPIES.



SEE CIVIL PLAN FOR CONTINUATION



SEE CIVIL PLAN FOR CONTINUATION

**DOMESTIC WATER RISER DIAGRAM**  
SCALE: N.T.S.

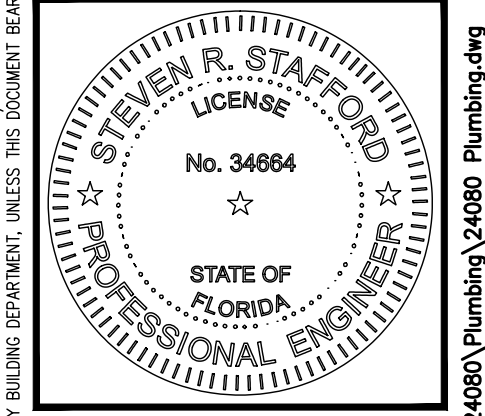
PROJECT NAME:  
**North Collier Fire Control  
& Rescue Station #49**  
Cocohatchee Road  
Naples, FL 34110

**STAFFORD  
ENGINEERING,  
INC.**

3525 Bonita Beach Rd., Suite 111, Bonita Springs, FL 34134  
239-948-5841 / 239-948-5990 FAX  
www.staffordengineeringinc.com

Steven R. Stafford - PE - Florida License # 34664  
Certificate Of Authorization No. 26464

ISSUED FOR BID	SEPTEMBER 30, 2025
ISSUED FOR PERMIT	AUGUST 11, 2025
#	REVISION / DATE



DATE:	08/11/25
DRAWN BY:	R.A.M.
CHECKED BY:	S.R.S.
JOB NUMBER:	24080

**P2.1**

THIS DESIGN AND THE DRAWINGS HEREOF ARE PREPARED FOR THIS PROJECT AND THE PROPERTY OF THE ENGINEER, STAFFORD ENGINEERING, INC. AND THE DESIGN AND/OR DRAWINGS MAY NOT BE USED IN WHOLE OR IN PART FOR ANY OTHER PROJECT FOR WHICH THE DESIGN AND/OR DRAWINGS WERE PREPARED, WITHOUT WRITTEN PERMISSION OF THE ENGINEER, STAFFORD ENGINEERING, INC. NO BUILDING PERMIT SHALL BE ISSUED BY ANY BUILDING DEPARTMENT, UNLESS THIS DOCUMENT BEARS THE ORIGINAL SEAL AND SIGNATURE OF THE ENGINEER, STAFFORD ENGINEERING, INC.

10/7/2025 12:22 PM C:\Working Projects\24080\Plumbing\24080\_Plumbing.dwg  
 THIS DRAWING HAS BEEN ELECTRONICALLY SIGNED AND SEALED BY STEVEN R. STAFFORD ON DATE INDICATED ON DIGITAL SIGNATURE.  
 PRINTED COPIES OF THIS DOCUMENT ARE NOT CONSIDERED SIGNED AND SEALED AND THE SIGNATURE MUST BE VERIFIED ON ANY ELECTRONIC COPIES.

