

# COLLIER COUNTY

## NORTH COLLIER FIRE STATION 49 SITE DEVELOPMENT PLAN (SDP) - PL20240001457

### SITE LIGHTING

#### INDEX OF LIGHTING PLANS

SHEET NO.	SHEET DESCRIPTION
L-1	KEY SHEET
L-2	DETAILS AND NOTES
L-3	PLAN

#### PLANS PREPARED FOR:

NORTH COLLIER FIRE CONTROL &  
RESCUE DISTRICT  
1885 VETERANS PARK DR.  
NAPLES, FL 34109

#### "GOVERNING STANDARD PLANS:

Florida Department of Transportation, FY 2025-26 Standard Plans for Road and Bridge Construction and applicable Interim Revisions (IRs).

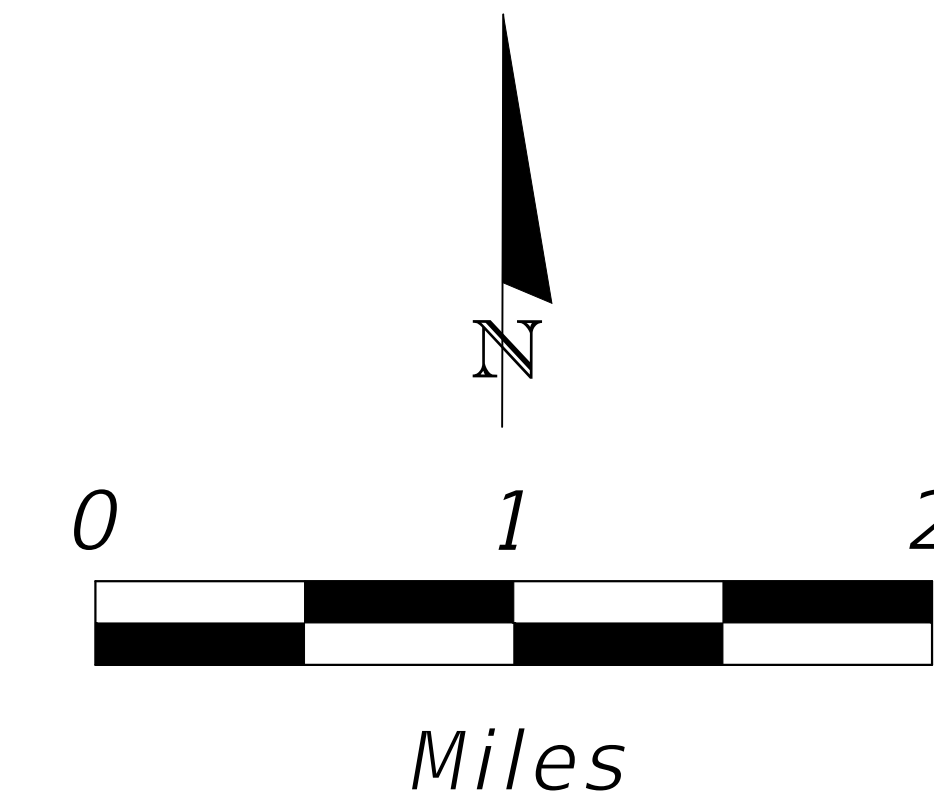
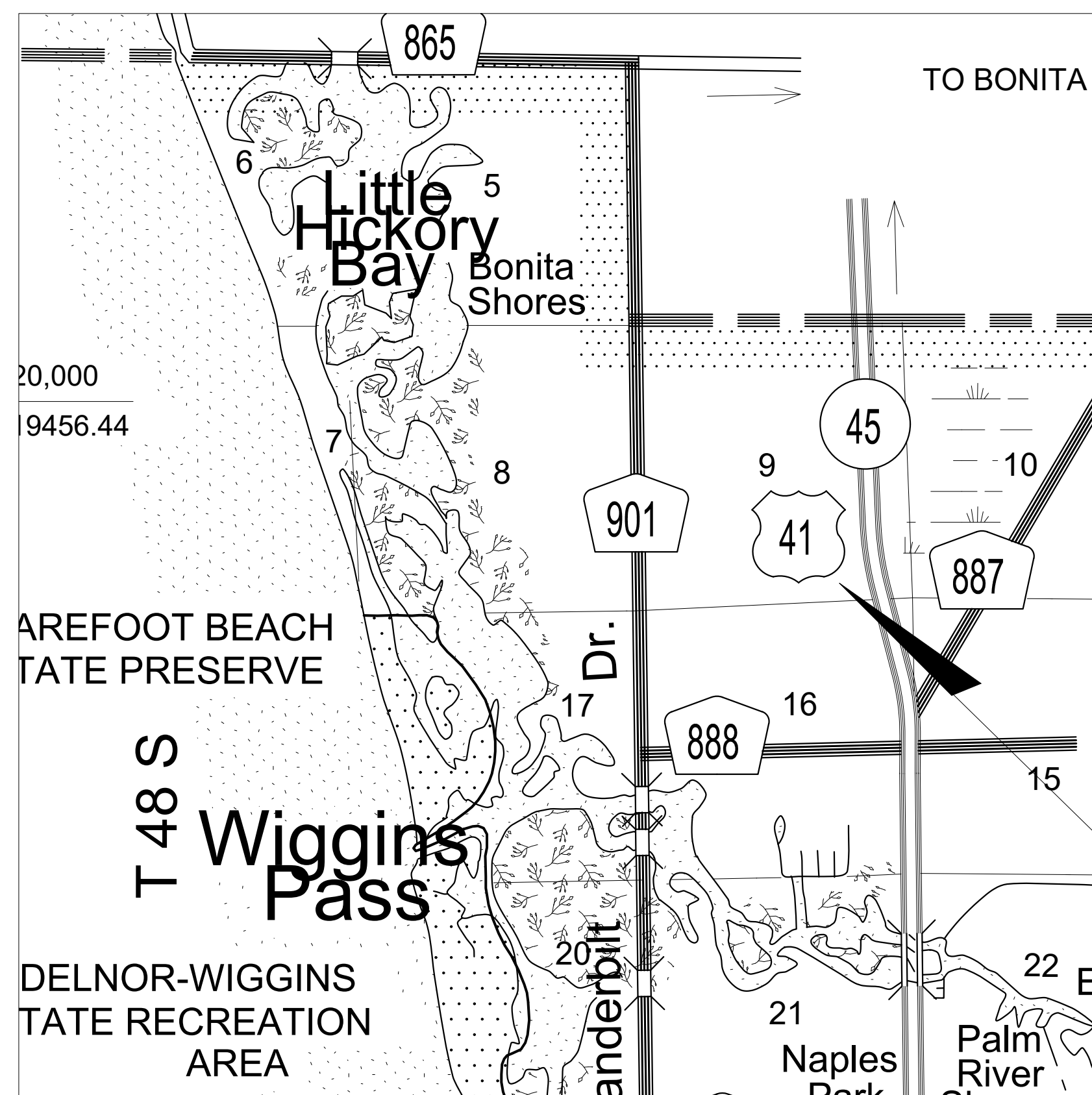
Standard Plans for Road Construction and associated IRs are available at the following website:

<https://www.fdot.gov/design/standardplans>

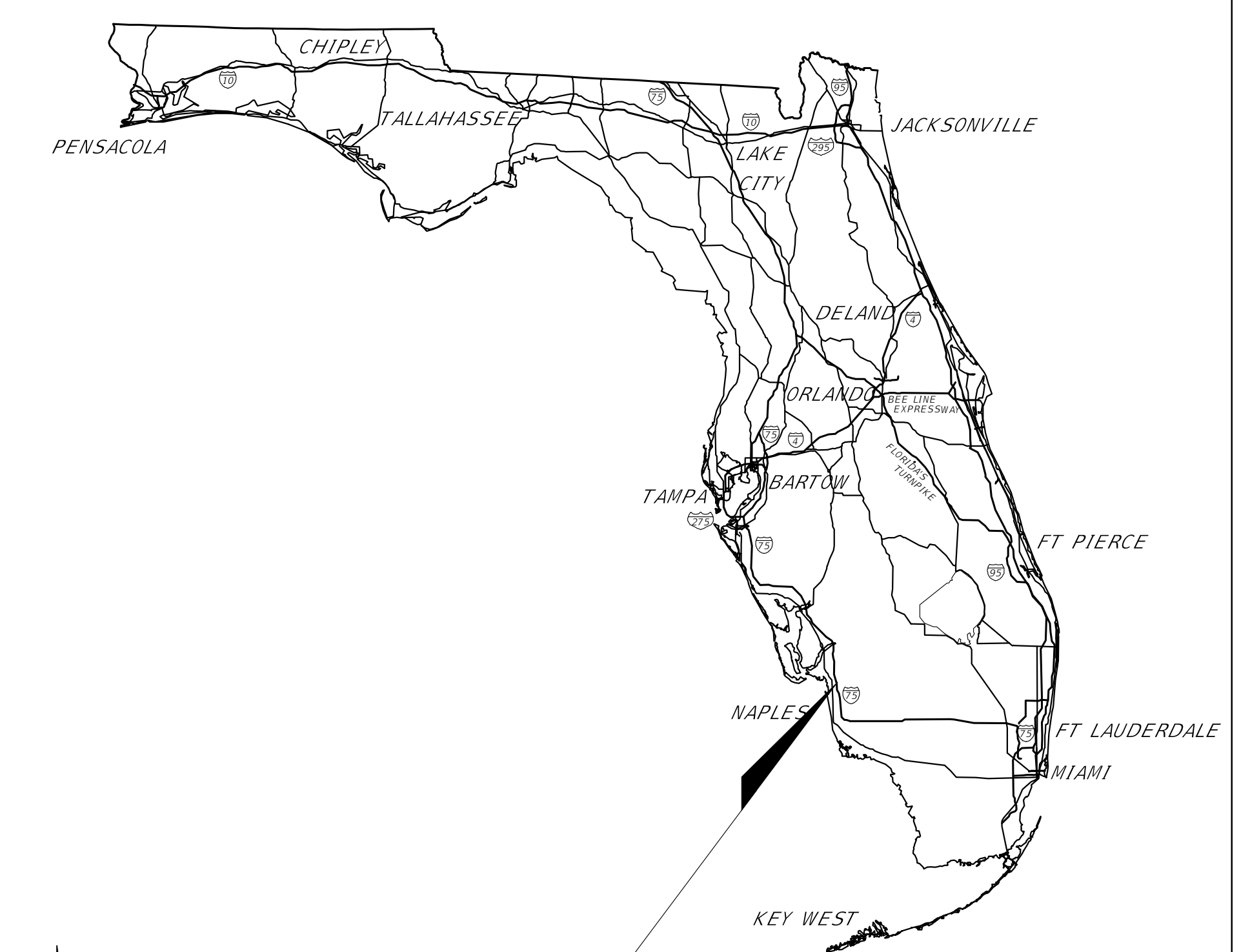
#### GOVERNING STANDARD SPECIFICATIONS:

Florida Department of Transportation, FY 2025-26 Standard Specifications for Road and Bridge Construction at the following website:

<https://www.fdot.gov/programmanagement/Implemented/SpecsBooks>



PROJECT LOCATION



SHOP DRAWINGS SUBMITTED TO:  
PLANS PREPARED BY:

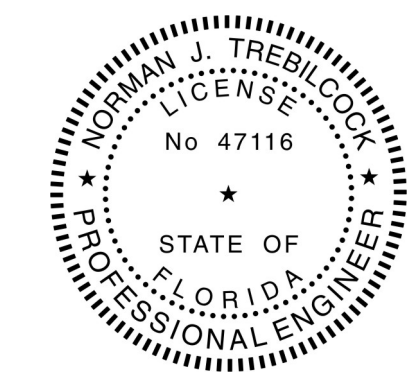


TREBILCOCK CONSULTING SOLUTIONS, PA  
2800 DAVIS BLVD SUITE 200 NAPLES FL 34104  
CERTIFICATE OF AUTHORIZATION No.27796  
PHONE: 239 566 9551  
FAX: 239 566 9553

NOTE: THE SCALE OF THESE PLANS MAY  
HAVE CHANGED DUE TO REPRODUCTION.

ISSUE FOR PERMIT DATE: 02-17-2025

KEY SHEET REVISIONS	
DATE	DESCRIPTION
10/2/25	REVISED PROJECT NAME



ROADWAY PLANS  
ENGINEER OF RECORD: NORMAN J. TREBILCOCK PE, PTOE, AICP

P.E. NO.: 47116

PRINTED COPIES OF THIS DOCUMENT ARE NOT CONSIDERED  
SIGNED AND SEALED AND THE SIGNATURE MUST BE VERIFIED  
ON ANY ELECTRONIC COPIES.

FISCAL YEAR	SHEET NO.
24	L-1

## LIGHTING FIXTURE SCHEDULE

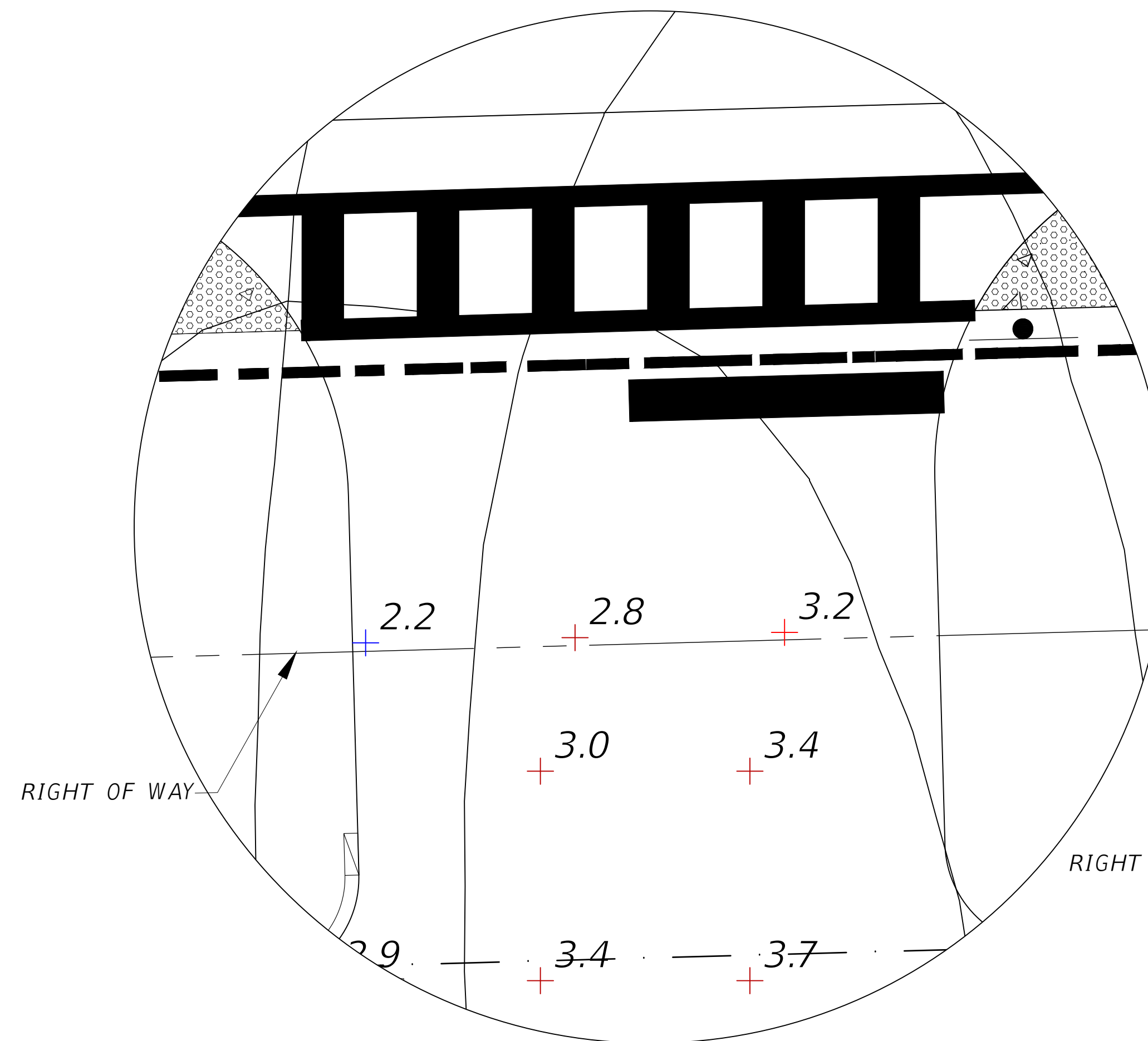
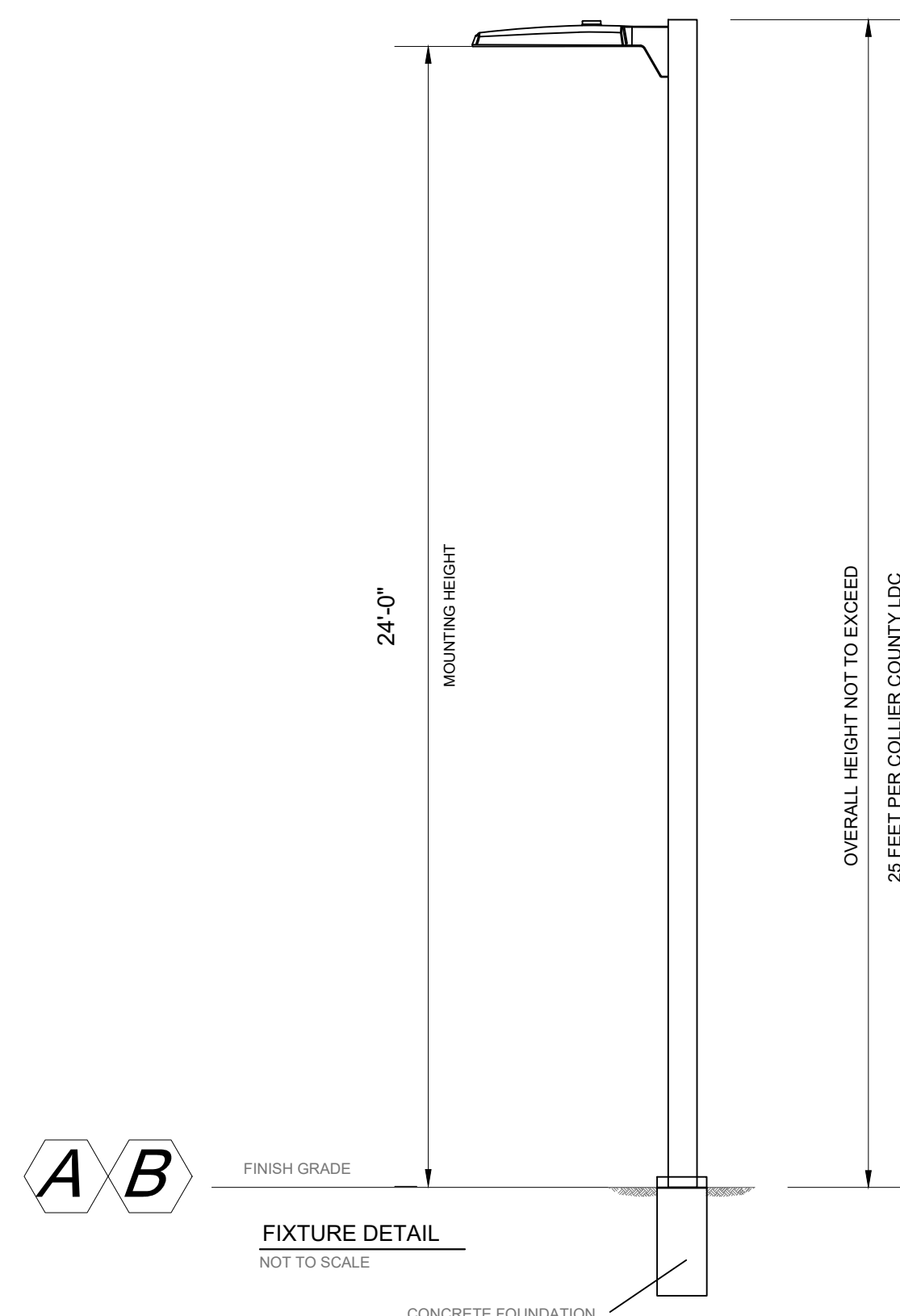
MANUFACTURER	QTY	LAMP	LUMINAIRE CATALOG NUMBER *	ORDER INFORMATION		REMARKS
				VOLTAGE	MT	
A LITHONIA	4	LED	DSX0 LED P6 30K 70CRI T3M HS	MVOLT	POLE	** SINGLE FIXTURE ON AN 24' MH ON A ALUMINUM POLE WITH CONCRETE FOUNDATION.3000k TYPE 3 OPTIC AND HOUSE SHIELDS
B LITHONIA	2	LED	DSX0 LED P7 30K 80CRI T4M HS	MVOLT	POLE	** SINGLE FIXTURE ON AN 24' MH ON A ALUMINUM POLE WITH CONCRETE FOUNDATION.3000k TYPE 4 OPTIC AND HOUSE SHIELDS

\* OR EQUAL PER ALTERNATE MANUFACTURER  
 \*\* FIXTURE COLOR BY OWNER

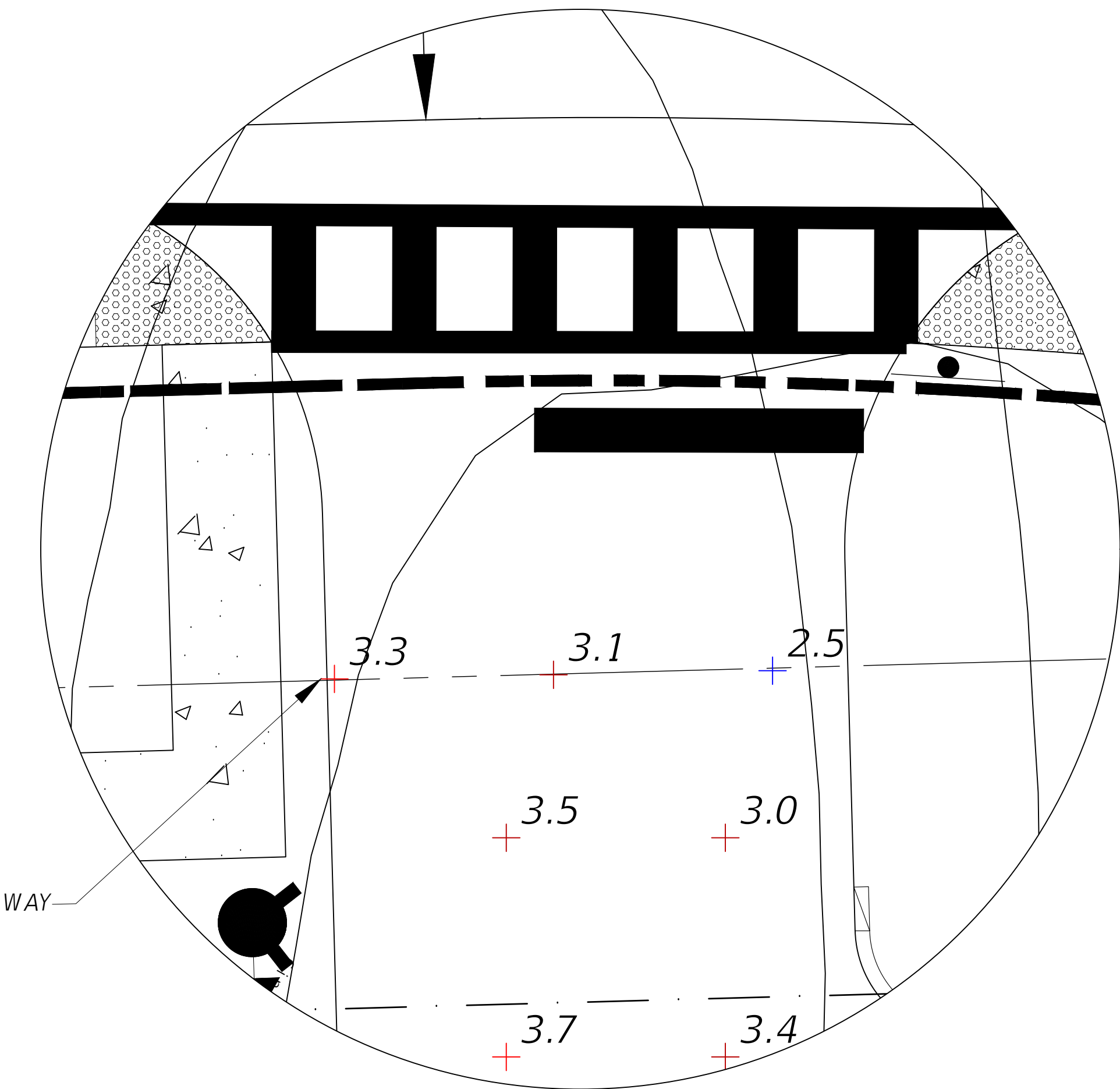
<i>Statistics</i>						
Description	Symbol	Avg	Max	Min	Max/Min	Avg/Min
East Parking	+	2.0 fc	3.7 fc	0.5 fc	7.4:1	4.0:1
SDP Boundary	+	0.1 fc	0.4 fc	0.0 fc	N/A	N/A
West Entrance RW	+	2.7 fc	3.2 fc	2.2 fc	1.5:1	1.2:1
West Parking	+	2.0 fc	3.8 fc	0.5 fc	7.6:1	4.0:1
East Entrance RW	+	3.0 fc	3.3 fc	2.5 fc	1.3:1	1.2:1

**GENERAL ELECTRICAL NOTES:**

1. ELECTRICAL WORK SHALL BE IN CONFORMANCE WITH LOCAL, STATE AND FEDERAL CODES AND ORDINANCES GOVERNING ELECTRICAL SYSTEMS.
2. CONTRACTOR SHALL VERIFY LOCATION OF PROPOSED UTILITIES, AND IRRIGATION SLEEVES PRIOR TO DRILLING POLE FOUNDATION. MINOR POLE LOCATION MODIFICATIONS MAY BE MADE BY CONTRACTOR IN THE FIELD TO AVOID CONFLICTS. MAJOR POLE LOCATION MODIFICATIONS SHALL BE APPROVED BY ENGINEER OF RECORD.
3. PRIOR TO PURCHASING ELECTRICAL EQUIPMENT, SHOP DRAWINGS SHALL BE SUBMITTED TO ENGINEER FOR APPROVAL.
4. UPON COMPLETION OF THE PROJECT CONTRACTOR SHALL SUPPLY OWNER ONE SET OF AS-BUILT SHOP DRAWINGS, SHOWING EXACT ELECTRICAL INSTALLATION.
5. FUSE HOLDERS (BUSSMAN TRON IN-LINE FUSE HOLDER W/ FNM 5 AMP SLOW BLOW FUSE OR EQUAL), SURGE PROTECTORS (HUNT ENTERPRISES IN-LINE TYPE OR EQUAL) AND GROUND RODS (5/8" X 10', COPPER CLAD, MEASURED 25 OHMS OR LESS) SHALL BE PROVIDED AT EACH LIGHT POLE FIXTURE BASE.
6. PULL BOXES SHALL BE IN-GROUND TYPE CARSON 1419-48 BOLT DOWN T COVER (OR EQUAL)
7. CONTRACTOR TO SUPPLY ENGINEERED FIXTURE, POLE AND FOUNDATION DESIGN SEALED BY FLORIDA STRUCTURAL ENGINEER TO REQUIRED DESIGN WIND SPEED.
8. ALL CONDUCTORS ARE COPPER WITH THHN INSULATION UNLESS OTHERWISE NOTED.



WEST ENTRANCE  
RIGHT OF WAY  
PHOTOMETRICS



EAST ENTRANCE  
RIGHT OF WAY  
PHOTOMETRICS

NORMAN TREBILCOCK, AICP, PTOE, PE #47116  
 TCS CERTIFICATE OF AUTHORIZATION No. 27796  
 ISSUE FOR PERMIT DATE: 02-17-2025

REVISIONS			
DATE	DESCRIPTION	DATE	DESCRIPTION
10/2/25	REVISED PROJECT NAME		

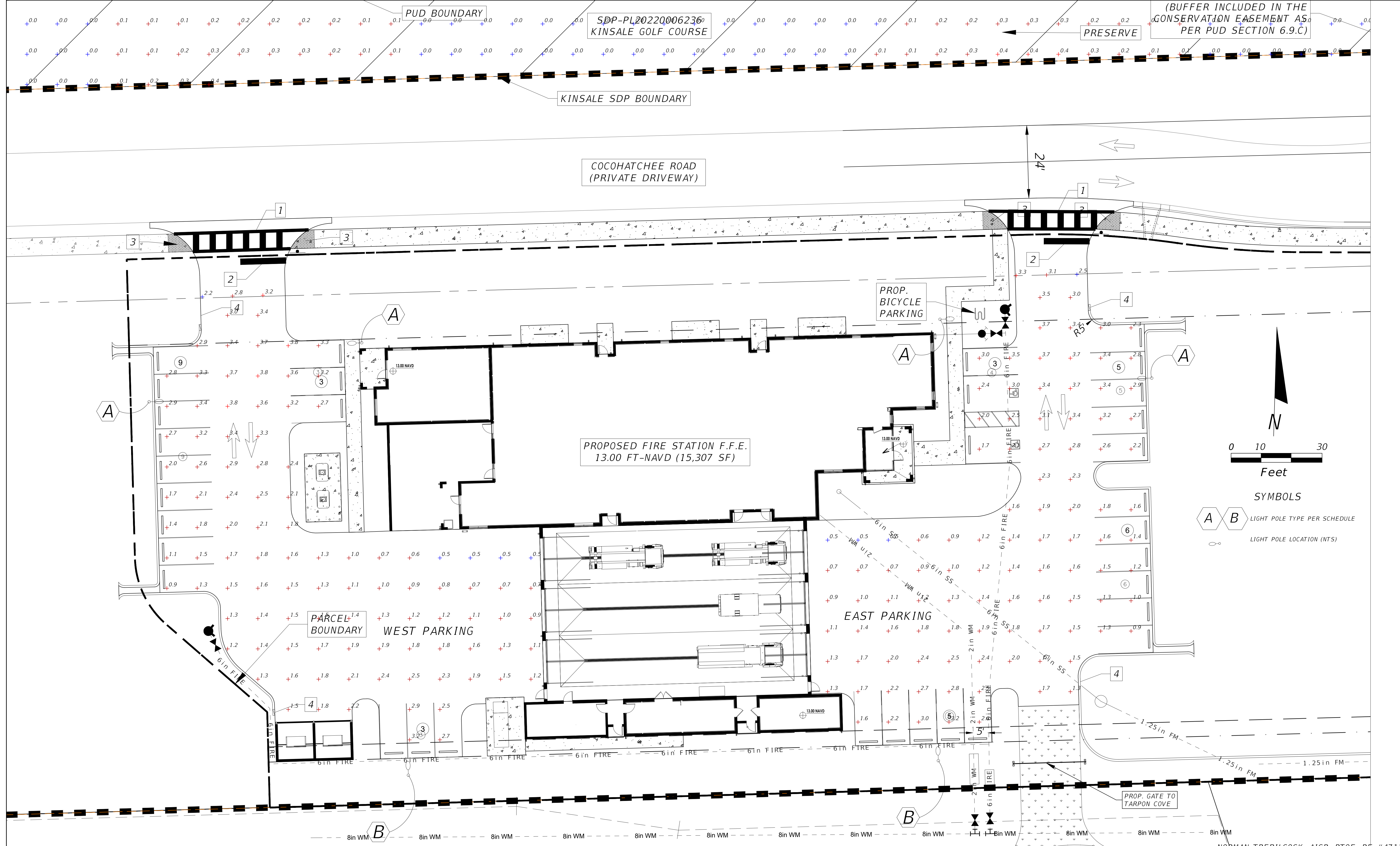
**TREBILCOCK**  
CONSULTING SOLUTIONS

2800 DAVIS BLVD SUITE 200 NAPLES FL 34104

NORTH COLLIER FIRE STATION 49 SITE DEVELOPMENT PLAN (SDP)		
ROAD NO.	COUNTY	FINANCIAL PROJECT ID
NA	COLLIER	NA

DETAILS & NOTES

SHEET NO.
L-2



(BUFFER INCLUDED IN THE CONSERVATION EASEMENT AS PER PUD SECTION 6.9.C)

PRESERVE

PUD BOUNDARY

SDP-PL202200062360  
KINSALE GOLF COURSE

KINSALE SDP BOUNDARY

COCOHATCHEE ROAD  
(PRIVATE DRIVEWAY)

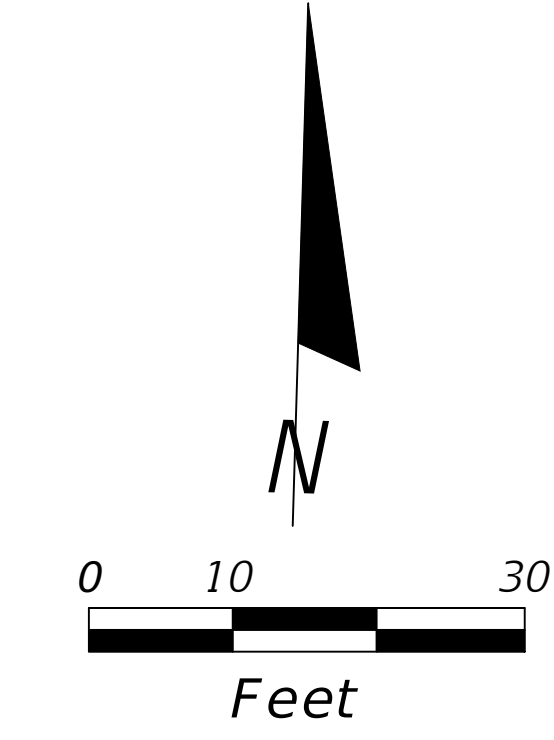
PROPOSED FIRE STATION F.F.E.  
13.00 FT-NAVD (15,307 SF)

PROP. BICYCLE PARKING

EAST PARKING

WEST PARKING

PARCEL BOUNDARY



SYMBOLS  
 A B LIGHT POLE TYPE PER SCHEDULE  
 LIGHT POLE LOCATION (NTS)

NORMAN TREBILCOCK, AICP, PTOE, PE #47116  
 TCS CERTIFICATE OF AUTHORIZATION No. 27796  
 ISSUE FOR PERMIT DATE: 02-17-2025

REVISIONS			
DATE	DESCRIPTION	DATE	DESCRIPTION
10/2/25	REVISED PROJECT NAME		

**TREBILCOCK**  
CONSULTING SOLUTIONS  
2800 DAVIS BLVD SUITE 200 NAPLES FL 34104

NORTH COLLIER FIRE STATION 49 SITE DEVELOPMENT PLAN (SDP)		
ROAD NO.	COUNTY	FINANCIAL PROJECT ID
NA	COLLIER	NA

PLAN

SHEET NO.  
L-5